

DCLRE1C Rabbit pAb

货号: AYP12378

产品信息

反应	Human,Mouse,Rat
宿主	Rabbit
克隆性	Polyclonal
预测反应	WB: Homo sapiens
应用	WB
推荐浓度	WB: 1:500 - 1:2000
理论分子量	49kDa/64kDa/65kDa/78kDa
实测分子量	90KDa
形式	Liquid
保存条件	Store at -20°C. Avoid freeze / thaw cycles. Buffer: PBS with 0.02% sodium azide,50% glycerol,pH7.3.
偶联物	Unconjugated
阳性对照	Mouse thymus
细胞定位	Nucleus
纯化	Affinity purification

抗原信息

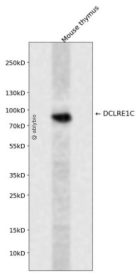
抗原信息	Recombinant fusion protein containing a sequence corresponding to amino acids 1-300 of human DCLRE1C (NP_001029027.1).
序列	MSSFEGQMAEYPTISIDRFDRENLRARAYFLSHCHKDHMKGLRAPTLKRRLECSLKVYLYCSPVTKELLTSPKYRFWKKRII SIEIETPTQISLVDEASGEKEEIVVTLTPAGHCPCGSVMFLFQGNNGTVLYTGDFRLAQGEAARMELLHSGGRVKDIQSVYLD TTFCDPRFYQIPSRREECLSGVLELVRSWITRSPYHVWLNCKAAYGYEYLFNLSEELGVQVHVNKLDMFRNMPEILHHLTT DRNTQIHACRHPKAEYFQWSKPCGITSRNRIPLHIISIKPSTMWFGERSRK

靶点信息

研究背景	This gene encodes a nuclear protein that is involved in V(D)J recombination and DNA repair. The encoded protein has single-strand-specific 5'-3' exonuclease activity; it also exhibits endonuclease activity on 5' and 3' overhangs and hairpins. The protein also functions in the regulation of the cell cycle in response to DNA damage. Mutations in this gene can cause Athabaskan-type severe combined immunodeficiency (SCIDA) and Omenn syndrome. Alternative splicing results in multiple transcript variants.
------	--

基因ID	64421
基因名	DCLRE1C
Swiss	Q96SD1
别名	DCLRE1C;A-SCID;DCLREC1C;RS-SCID;SCIDA;SNM1C

产品验证



Western blot analysis of DCLRE1C expressed in Mouse thymus using DCLRE1C Rabbit pAb at 1:1000. Secondary antibody: HRP Goat Anti-Rabbit IgG (H+L) at 1:5000. Lysates/proteins: 30ug per lane. Blocking buffer: 5% non-fat dry milk in TBST. Detection: ECL Enhanced Kit. Exposure time: 120s.

实验步骤

访问官网浏览详情: www.ablybio.cn