

EPO Rabbit pAb

货号: **AYP12374**

产品信息

反应	Human,Mouse,Rat
宿主	Rabbit
克隆性	Polyclonal
预测反应	WB: Rattus norvegicus
应用	WB IHC IF/ICC
推荐浓度	WB: 1:500 - 1:1000 IHC: 1:100 - 1:200 IF/ICC: 1:50 - 1:200
理论分子量	21kDa
实测分子量	37kDa
形式	Liquid
保存条件	Store at -20°C. Avoid freeze / thaw cycles. Buffer: PBS with 0.05% proclin300,50% glycerol,pH7.3.
偶联物	Unconjugated
阳性对照	293T,Mouse kidney,Rat liver
细胞定位	Secreted
纯化	Affinity purification

抗原信息

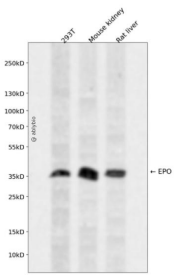
抗原信息	A synthetic peptide corresponding to a sequence within amino acids 100-193 of human EPO (NP_000790.2).
序列	AVLRGQALLVNSSQPWEPLQLHVDKAVSGLRSLTLLRALGAQKEAISPPDAASAAPLRITADTFRKLFVYSNFLRGKLLYTGEACRTGDR

靶点信息

研究背景	This gene is a member of the EPO/TPO family and encodes a secreted, glycosylated cytokine composed of four alpha helical bundles. The protein is found in the plasma and regulates red cell production by promoting erythroid differentiation and initiating hemoglobin synthesis. This protein also has neuroprotective activity against a variety of potential brain injuries and antiapoptotic functions in several tissue types.
------	--

基因ID	2056
基因名	EPO
Swiss	P01588
别名	EPO;EP;MVCD2

产品验证



Western blot analysis of EPO expressed in 293T, Mouse kidney, Rat liver using EPO Rabbit pAb at 1:1000. Secondary antibody: HRP Goat Anti-Rabbit IgG (H+L) at 1:5000. Lysates/proteins: 30ug per lane. Blocking buffer: 5% non-fat dry milk in TBST. Detection: ECL Enhanced Kit. Exposure time: 120s.

实验步骤

访问官网浏览详情: www.ablybio.cn