

# FH Rabbit pAb

货号: **AYP12373**

## 产品信息

|       |  |
|-------|--|
| 反应    | Human,Mouse,Rat  |
| 宿主    | Rabbit   |
| 克隆性   | Polyclonal   |
| 预测反应  | <b>WB:</b> Mus musculus , Homo sapiens   |
| 应用    | <a href="#">WB</a> <a href="#">IHC</a> <a href="#">IF/ICC</a>  |
| 推荐浓度  | <b>WB:</b> 1:100 - 1:500<br><b>IHC:</b> 1:50 - 1:200<br><b>IF/ICC:</b> 1:50 - 1:100                    |
| 理论分子量 | 50kDa/54kDa  |
| 实测分子量 | 47KDa  |
| 形式    | Liquid   |
| 保存条件  | Store at -20°C. Avoid freeze / thaw cycles.<br>Buffer: PBS with 0.02% sodium azide,50% glycerol,pH7.3. |
| 偶联物   | Unconjugated   |
| 阳性对照  | HeLa,NIH/3T3,C2C12,C6,Rat liver  |
| 细胞定位  | Cytoplasm,Mitochondrion  |
| 纯化    | Affinity purification  |

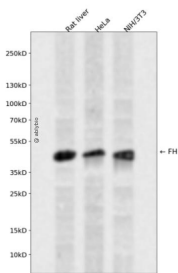
## 抗原信息

|      |   |
|------|---|
| 抗原信息 | Recombinant fusion protein containing a sequence corresponding to amino acids 1-280 of human FH (NP_000134.2).  |
| 序列   | MYRALRLLARSRLVRAPAAALASAPGLGGAAVPSFWPPNAARMASQNSFRIEYDTFGELKVPNDKYYGAQTVRSTMNFK<br>IGGVTERMPVPVIAFGILKRAAAEVNQDYGLDPKIANAIMKAADEVAEGKLNDFPLVWVWQTGSGTQTNMNVNEVISNR<br>AIEMLGSELGSKIPVHPNDHVNKSQSSNDTFPTAMHIAAAIEVHEVLLPGLQKLHDALDAKSKEFAQIIKIGRTHQTQDAVPLT<br>LGQEFSGYVQVQKYAMTRIKAAMPRIYELAAGGTAVG |

## 靶点信息

|       |  |
|-------|--|
| 研究背景  | The protein encoded by this gene is an enzymatic component of the tricarboxylic acid (TCA) cycle, or Krebs cycle, and catalyzes the formation of L-malate from fumarate. It exists in both a cytosolic form and an N-terminal extended form, differing only in the translation start site used. The N-terminal extended form is targeted to the mitochondrion, where the removal of the extension generates the same form as in the cytoplasm. It is similar to some thermostable class II fumarases and functions as a homotetramer. Mutations in this gene can cause fumarase deficiency and lead to progressive encephalopathy. |
| 基因ID  | 2271   |
| 基因名   | FH   |
| Swiss | P07954   |
| 别名    | FH;FMRD;HLRCC;LRCC;MCL;MCUL1   |

## 产品验证



Western blot analysis of FH expressed in Rat liver, HeLa, NIH/3T3 using FH Rabbit pAb at 1:1000. Secondary antibody: HRP Goat Anti-Rabbit IgG (H+L) at 1:5000. Lysates/proteins: 30ug per lane. Blocking buffer: 5% non-fat dry milk in TBST. Detection: ECL Enhanced Kit. Exposure time: 120s.

## 实验步骤

访问官网浏览详情: [www.ablybio.cn](http://www.ablybio.cn)