

— ABLYBIO, Help Your Research



MT-ND6 Rabbit pAb

货号: **AYP12365**

产品信息

反应	Human,Mouse,Rat
宿主	Rabbit
克隆性	Polyclonal
预测反应	WB: Homo sapiens
应用	WB IHC
推荐浓度	WB: 1:1000 - 1:5000 IHC: 1:50 - 1:200
理论分子量	19kDa
实测分子量	24KDa
形式	Liquid
保存条件	Store at -20°C. Avoid freeze / thaw cycles. Buffer: PBS with 0.05% proclin300,50% glycerol,pH7.3.
偶联物	Unconjugated
阳性对照	HepG2,Mouse brain,Mouse liver,Rat brain
细胞定位	mitochondrial inner membrane,mitochondrial respiratory chain complex I
纯化	Affinity purification

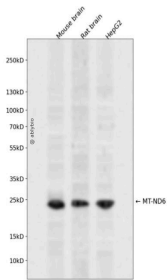
抗原信息

抗原信息	A synthetic peptide corresponding to a sequence within amino acids 120 to the C-terminus of human MT-ND6 (BAH15396.1).
------	--

靶点信息

研究背景	Core subunit of the mitochondrial membrane respiratory chain NADH dehydrogenase (Complex I which catalyzes electron transfer from NADH through the respiratory chain, using ubiquinone as an electron acceptor. Essential for the catalytic activity and assembly of complex I.
基因ID	4541
基因名	MT-ND6
Swiss	P03923 (https://www.uniprot.org/uniprotkb/P03923/entry)
别名	MTND6,MT-ND6,MT-ND6 Rabbit pAb,NADH dehydrogenase subunit 6,NADH6,ND6

产品验证



Western blot analysis of MT-ND6 expressed in Mouse brain,Rat brain,HepG2 using MT-ND6 Rabbit pAb at 1:1000. Secondary antibody: HRP Goat Anti-Rabbit IgG (H+L) at 1:5000. Lysates/proteins: 30ug per lane. Blocking buffer: 5% non-fat dry milk in TBST. Detection: ECL Enhanced Kit. Exposure time: 120s.

实验步骤

访问官网浏览详情: www.ablybio.cn (<https://www.ablybio.cn/>www.ablybio.cn)