

— ABLYBIO, Help Your Research



EZH1 Rabbit pAb

货号: **AYP12361**

产品信息

反应	Human,Mouse,Rat
宿主	Rabbit
克隆性	Polyclonal
预测反应	IP: Homo sapiens WB: Rattus norvegicus
应用	WB
推荐浓度	WB: 1:500 - 1:2000
理论分子量	68kDa/76kDa/80kDa/85kDa/86kDa
实测分子量	85kDa
形式	Liquid
保存条件	Store at -20°C. Avoid freeze / thaw cycles. Buffer: PBS with 0.02% sodium azide,50% glycerol,pH7.3.
偶联物	Unconjugated
阳性对照	mouse lung
细胞定位	Nucleus
纯化	Affinity purification

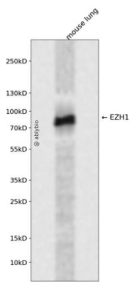
抗原信息

抗原信息	Recombinant fusion protein containing a sequence corresponding to amino acids 160-280 of human EZH1 (NP_001982.2).
------	--

靶点信息

研究背景	EZH1 is a component of a noncanonical Polycomb repressive complex-2 (PRC2) that mediates methylation of histone H3 (see MIM 602812) lys27 (H3K27) and functions in the maintenance of embryonic stem cell pluripotency and plasticity (Shen et al., 2008 [PubMed 19026780]).[supplied by OMIM, Mar 2009]
基因ID	2145
基因名	EZH1
Swiss	Q92800 (https://www.uniprot.org/uniprotkb/Q92800/entry)
别名	EZH1,KMT6B,EZH1 Rabbit pAb,ENX-2,Enhancer of zeste homolog 1,KIAA0388

产品验证



Western blot analysis of EZH1 expressed in mouse lung using EZH1 Rabbit pAb at 1:1000. Secondary anti body: HRP Goat Anti-Rabbit IgG (H+L) at 1:5000. Lysates/proteins: 30ug per lane. Blocking buffer: 5% non-fat dry milk in TBST. Detection: ECL Enhanced Kit. Exposure time: 120s.

实验步骤

访问官网浏览详情: www.ablybio.cn (<https://www.ablybio.cn/www.ablybio.cn>)