

PPM1D Rabbit pAb

货号: **AYP12350**

产品信息

反应	Human,Mouse,Rat
宿主	Rabbit
克隆性	Polyclonal
预测反应	WB: Mus musculus
应用	WB
推荐浓度	WB: 1:500 - 1:2000
理论分子量	47kDa/66kDa
实测分子量	67kDa
形式	Liquid
保存条件	Store at -20°C. Avoid freeze / thaw cycles. Buffer: PBS with 0.02% sodium azide,50% glycerol,pH7.3.
偶联物	Unconjugated
阳性对照	MCF7,HeLa,Rat testis
细胞定位	cytosol,nucleolus,nucleoplasm,nucleus
纯化	Affinity purification

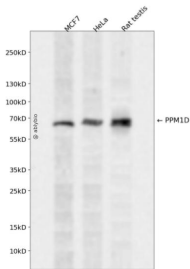
抗原信息

抗原信息	Recombinant fusion protein containing a sequence corresponding to amino acids 1-250 of human PPM1D (NP_003611.1).
序列	MAGLYSLGVSVFSDQGGRKYMEDVTQIVVEPEPTAEEKSPRRSLSQPLPPRPSAALPGGEVSGKGPAAVAAREARDPLP DAGASPAPSRCCRRRSSVAFFAVCDGHGGREAAQFAREHLWGFQKQKGFSTSEPAKVCAAIRKGFACHLAMWKKLAE WPKTMTGLPSTSGTTASVVIIRGMKMYVAHVGDGSGVVLGIQDDPKDDFVRAVEVTQDHKPELPKERERIEGLGGSVMNK SGVNRVWKRPR

靶点信息

研究背景	The protein encoded by this gene is a member of the PP2C family of Ser/Thr protein phosphatases. PP2C family members are known to be negative regulators of cell stress response pathways. The expression of this gene is induced in a p53-dependent manner in response to various environmental stresses. While being induced by tumor suppressor protein TP53/p53, this phosphatase negatively regulates the activity of p38 MAP kinase, MAPK/p38, through which it reduces the phosphorylation of p53, and in turn suppresses p53-mediated transcription and apoptosis. This phosphatase thus mediates a feedback regulation of p38-p53 signaling that contributes to growth inhibition and the suppression of stress induced apoptosis. This gene is located in a chromosomal region known to be amplified in breast cancer. The amplification of this gene has been detected in both breast cancer cell line and primary breast tumors, which suggests a role of this gene in cancer development.
基因ID	8493
基因名	PPM1D
Swiss	O15297
别名	PPM1D;PP2C-DELTA;WIP1;IDDGIP

产品验证



Western blot analysis of PPM1D expressed in MCF7, HeLa, Rat testis using PPM1D Rabbit pAb at 1:1000. Secondary antibody: HRP Goat Anti-Rabbit IgG (H+L) at 1:5000. Lysates/proteins: 30ug per lane. Blocking buffer: 5% non-fat dry milk in TBST. Detection: ECL Enhanced Kit. Exposure time: 120s.

实验步骤

访问官网浏览详情: www.ablybio.cn