

# TAP1 Rabbit pAb

货号: **AYP12348**

## 产品信息

反应	Human,Mouse
宿主	Rabbit
克隆性	Polyclonal
预测反应	<b>FC:</b> Mus musculus <b>WB:</b> Homo sapiens
应用	WB
推荐浓度	<b>WB:</b> 1:500 - 1:1000
理论分子量	87kDa
实测分子量	68kDa
形式	Liquid
保存条件	Store at -20°C. Avoid freeze / thaw cycles. Buffer: PBS with 0.02% sodium azide,50% glycerol,pH7.3.
偶联物	Unconjugated
阳性对照	SKOV3,Jurkat,Mouse lung,Mouse spleen
细胞定位	Endoplasmic reticulum membrane,Multi-pass membrane protein
纯化	Affinity purification

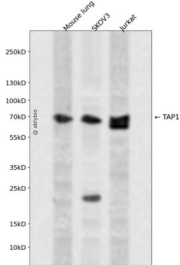
## 抗原信息

抗原信息	Recombinant fusion protein containing a sequence corresponding to amino acids 524-808 of human TAP1 (NP_000584.2).
序列	IYPRVQKAVGSSEKIFEYLDRTPRCPPSGLLTPHLHLEGLVQFDVSFAYPNRPDVLVLQGLTFTLRPGEVTALVGPNGSGKS TVAALLQNLQPTGGQLLDGKPLPQYEHRYLHRQVAAVGQEPQVFGRLQENIAYGLTQKPTMEEITAAAVKSGAHSFIS GLPQGYDTEVDEAGSQLSGGQRQAVALARALIRKPCVLILDDATSALDANSQLQVEQLLYESPERYSRSVLLITQHLSLVE QADHILFLEGGAIREGGTHQQLMEKKGCYWAMVQAPADAPE

## 靶点信息

研究背景	The membrane-associated protein encoded by this gene is a member of the superfamily of ATP-binding cassette (ABC) transporters. ABC proteins transport various molecules across extra- and intra-cellular membranes. ABC genes are divided into seven distinct subfamilies (ABC1, MDR/TAP, MRP, ALD, OABP, GCN20, White). This protein is a member of the MDR/TAP subfamily. Members of the MDR/TAP subfamily are involved in multidrug resistance. The protein encoded by this gene is involved in the pumping of degraded cytosolic peptides across the endoplasmic reticulum into the membrane-bound compartment where class I molecules assemble. Mutations in this gene may be associated with ankylosing spondylitis, insulin-dependent diabetes mellitus, and celiac disease. Two transcript variants encoding different isoforms have been found for this gene.
基因ID	6890
基因名	TAP1
Swiss	Q03518
别名	TAP1;ABC17;ABCB2;APT1;D6S114E;PSF-1;PSF1;RING4;TAP1*0102N;TAP1N

## 产品验证



Western blot analysis of TAP1 expressed in Mouse lung,SKOV3,Jurkat using TAP1 Rabbit pAb at 1:1000. Secondary antibody: HRP Goat Anti-Rabbit IgG (H+L) at 1:5000. Lysates/proteins: 30ug per lane. Blocking buffer: 5% non-fat dry milk in TBST. Detection: ECL Enhanced Kit. Exposure time: 120s.

## 实验步骤

访问官网浏览详情: [www.ablybio.cn](http://www.ablybio.cn)