

PDP1 Rabbit pAb

货号: **AYP12344**

产品信息

反应	Human,Mouse,Rat
宿主	Rabbit
克隆性	Polyclonal
预测反应	WB: Mus musculus IHC: Mus musculus
应用	WB IHC IF/ICC
推荐浓度	WB: 1:500 - 1:2000 IHC: 1:50 - 1:200 IF/ICC: 1:50 - 1:200
理论分子量	61kDa/63kDa
实测分子量	55kDa
形式	Liquid
保存条件	Store at -20°C. Avoid freeze / thaw cycles. Buffer: PBS with 0.02% sodium azide,50% glycerol,pH7.3.
偶联物	Unconjugated
阳性对照	Mouse brain,Mouse heart,Mouse skeletal muscle,Mouse testis,Rat brain
细胞定位	Mitochondrion matrix
纯化	Affinity purification

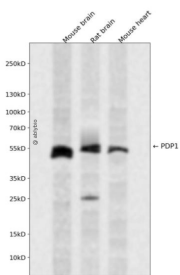
抗原信息

抗原信息	Recombinant fusion protein containing a sequence corresponding to amino acids 278-537 of human PDP1 (NP_060914.2).
序列	HVDGVDLHVANTGDSRAMLGVQEEDGWSAVTLSNDHNAQNERELERLKEHPKSEAKSVVKQDRLLGLLMPFRAFQDVKFKWSIDLQKRVIESGPDQLNDNEYTKFIPPNYHTPPYLTAEPEVTYHRLRPQDKFLVLATDGLWETMHRQDVVRIVGEYLTGMHHQQPIAVGGYKVTLGQMHGLLTERRTKMSSVFEDQNAATHLIRHAVGNNEFGTVDHERLSKMLSLPEELARMYRD DITIIVVQFNESHVVGAYQNQE

靶点信息

研究背景	Pyruvate dehydrogenase (E1) is one of the three components (E1, E2, and E3) of the large pyruvate dehydrogenase complex. Pyruvate dehydrogenase kinases catalyze phosphorylation of serine residues of E1 to inactivate the E1 component and inhibit the complex. Pyruvate dehydrogenase phosphatases catalyze the dephosphorylation and activation of the E1 component to reverse the effects of pyruvate dehydrogenase kinases. Pyruvate dehydrogenase phosphatase is a heterodimer consisting of catalytic and regulatory subunits. Two catalytic subunits have been reported; one is predominantly expressed in skeletal muscle and another one is much more abundant in the liver. The catalytic subunit, encoded by this gene, is the former, and belongs to the protein phosphatase 2C (PP2C) superfamily. Along with the pyruvate dehydrogenase complex and pyruvate dehydrogenase kinases, this enzyme is located in the mitochondrial matrix. Mutation in this gene causes pyruvate dehydrogenase phosphatase deficiency. Multiple alternatively spliced transcript variants encoding different isoforms have been identified.
基因ID	54704
基因名	PDP1
Swiss	Q9P0J1
别名	PDP1;PDH;PDP;PDPC;PPM2A;PPM2C

产品验证



Western blot analysis of PDP1 expressed in Mouse brain,Rat brain,Mouse heart using PDP1 Rabbit pAb at 1:1000. Secondary antibody: HRP Goat Anti-Rabbit IgG (H+L) at 1:5000. Lysates/proteins: 30ug per lane. Blocking buffer: 5% non-fat dry milk in TBST. Detection: ECL Enhanced Kit. Exposure time: 120s.

实验步骤

访问官网浏览详情: www.ablybio.cn