

BHLHE40 Rabbit pAb

货号: AYP12337

产品信息

反应	Human,Mouse,Rat
宿主	Rabbit
克隆性	Polyclonal
预测反应	WB: Homo sapiens ChIP: Homo sapiens
应用	WB IHC
推荐浓度	WB: 1:500 - 1:2000 IHC: 1:50 - 1:200
理论分子量	45kDa
实测分子量	48kDa
形式	Liquid
保存条件	Store at -20°C. Avoid freeze / thaw cycles. Buffer: PBS with 0.02% sodium azide,50% glycerol,pH7.3.
偶联物	Unconjugated
阳性对照	HepG2,Mouse kidney
细胞定位	Cytoplasm,Nucleus,nucleolus
纯化	Affinity purification

抗原信息

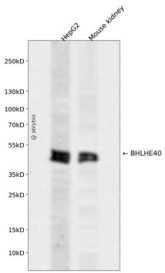
抗原信息	Recombinant fusion protein containing a sequence corresponding to amino acids 173-412 of human BHLHE40 (NP_003661.1).
序列	THLHRVSELLQGGTSRKPSDPAPKVMDFKEKPSSPAKGGSEPGKNCVPIQRTFAHSSGEQSGSDTDTDSGYGGESEK GDLRSEQPCFKSDHGRRFTMGERIGAIAKQSEEPPTKKNRMQLSDDEGHFTSSDLISSPFLGPHPHQPPFCLPFYLIPPSAT AYLPMLEKCWYPTSVPLYPLGNASAAAALSSFMNPKISAPLLMPQRLPSPLPAHPSVDSSVLLQALKPIPLNLETKD

靶点信息

研究背景	This gene encodes a basic helix-loop-helix protein expressed in various tissues. The encoded protein can interact with ARNTL or compete for E-box binding sites in the promoter of PER1 and repress CLOCK/ARNTL's transactivation of PER1. This gene is believed to be involved in the control of circadian rhythm and cell differentiation.
------	--

基因ID	8553
基因名	BHLHE40
Swiss	O14503
别名	BHLHE40;BHLHB2;Clast5;DEC1;HLHB2;SHARP-2;SHARP2;STRA13;Stra14

产品验证



Western blot analysis of BHLHE40 expressed in HepG2, Mouse kidney using BHLHE40 Rabbit pAb at 1:1000. Secondary antibody: HRP Goat Anti-Rabbit IgG (H+L) at 1:5000. Lysates/proteins: 30ug per lane. Blocking buffer: 5% non-fat dry milk in TBST. Detection: ECL Enhanced Kit. Exposure time: 120s.

实验步骤

访问官网浏览详情: www.ablybio.cn