

Pannexin 1 Rabbit pAb

货号: **AYP12334**

产品信息

反应	Human,Mouse
宿主	Rabbit
克隆性	Polyclonal
预测反应	WB: Mus musculus
应用	WB
推荐浓度	WB: 1:500 - 1:2000
理论分子量	47kDa/48kDa
实测分子量	54kDa
形式	Liquid
保存条件	Store at -20°C. Avoid freeze / thaw cycles. Buffer: PBS with 0.02% sodium azide,50% glycerol,pH7.3.
偶联物	Unconjugated
阳性对照	DU145,HeLa,MCF7,Mouse skin,Mouse spleen,Mouse brain
细胞定位	Cell junction,Cell membrane,Endoplasmic reticulum membrane,Multi-pass membrane protein,Multi-pass membrane protein,gap junction
纯化	Affinity purification

抗原信息

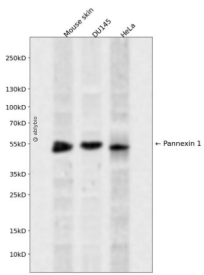
抗原信息	A synthetic peptide corresponding to a sequence within amino acids 50-150 of human Pannexin 1 (NP_056183.2).
序列	ISLAFQAQEISIGTQISCFSPSSFSWRQAAFVDSYCWA AVQQKNSLQSESGNLPLWLHKFFPYILLLLFAILLYLPPLFWRFAAA PHICSDLKFIMEELDKVY

靶点信息

研究背景	The protein encoded by this gene belongs to the innexin family. Innexin family members are the structural components of gap junctions. This protein and pannexin 2 are abundantly expressed in central nerve system (CNS) and are coexpressed in various neuronal populations. Studies in Xenopus oocytes suggest that this protein alone and in combination with pannexin 2 may form cell type-specific gap junctions with distinct properties.
------	--

基因ID	24145
基因名	PANX1
Swiss	Q96RD7
别名	PANX1;MRS1;PX1;UNQ2529

产品验证



Western blot analysis of Pannexin 1 expressed in Mouse skin,DU145,HeLa using Pannexin 1 Rabbit pAb at 1:1000. Secondary antibody: HRP Goat Anti-Rabbit IgG (H+L) at 1:5000. Lysates/proteins: 30ug per lane. Blocking buffer: 5% non-fat dry milk in TBST. Detection: ECL Enhanced Kit. Exposure time: 12 0s.

实验步骤

访问官网浏览详情: www.ablybio.cn