

SLC20A2 Rabbit pAb

货号: **AYP12328**

产品信息

反应	Human,Mouse,Rat
宿主	Rabbit
克隆性	Polyclonal
预测反应	WB: Rattus norvegicus
应用	WB
推荐浓度	WB: 1:500 - 1:2000
理论分子量	70kDa
实测分子量	70kDa
形式	Liquid
保存条件	Store at -20°C. Avoid freeze / thaw cycles. Buffer: PBS with 0.02% sodium azide,50% glycerol,pH7.3.
偶联物	Unconjugated
阳性对照	BT-474,HepG2,Mouse liver,Mouse kidney,Rat liver
细胞定位	Cell membrane,Multi-pass membrane protein
纯化	Affinity purification

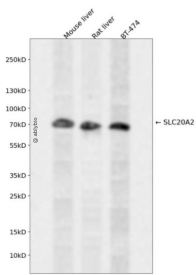
抗原信息

抗原信息	Recombinant fusion protein containing a sequence corresponding to amino acids 235-485 of human SLC20A2 (NP_001244110.1).
序列	CPWMRRKITGKLQKEGALSRVSDLSKVQEAESPVFKELPGAKANDDSTIPLTGAAGETLGTSEGTSAGSHPRAYGR LSMTHGSVKSPISNGTFGFDGHRSDGHVYHTVHKDSGLYKDLLHKIHIDRGPEEKPAQESNYRLLRRNNSYTCYAAICG LPVHATFRAADSSAPEDSEKLVGDTVSYSKRLRYDSYSSYCNAAVAEAEIEAEEGGVEMKLASELADPDQPREDPAEEEEKE EKDAPEVHL

靶点信息

研究背景	This gene encodes a member of the inorganic phosphate transporter family. The encoded protein is a type 3 sodium-dependent phosphate symporter that plays an important role in phosphate homeostasis by mediating cellular phosphate uptake. The encoded protein also confers susceptibility to viral infection as a gamma-retroviral receptor. Mutations in this gene may play a role in familial idiopathic basal ganglia calcification. Alternatively spliced transcript variants encoding multiple isoforms have been observed for this gene.
基因ID	6575
基因名	SLC20A2
Swiss	Q08357
别名	SLC20A2;GLVR-2;GLVR2;IBGC1;IBGC3;MLVAR;PIT-2;PIT2;RAM1;Ram-1

产品验证



Western blot analysis of SLC20A2 expressed in Mouse liver, Rat liver, BT-474 using SLC20A2 Rabbit pAb at 1:1000. Secondary antibody: HRP Goat Anti-Rabbit IgG (H+L) at 1:5000. Lysates/proteins: 30ug per lane. Blocking buffer: 5% non-fat dry milk in TBST. Detection: ECL Enhanced Kit. Exposure time: 120s.

实验步骤

访问官网浏览详情: www.ablybio.cn