

# PSMD13 Rabbit pAb

货号: **AYP12320**

## 产品信息

反应	Human,Mouse,Rat
宿主	Rabbit
克隆性	Polyclonal
预测反应	<b>WB:</b> Homo sapiens , Mus musculus
应用	<a href="#">WB</a> <a href="#">IHC</a> <a href="#">IF/ICC</a>
推荐浓度	<b>WB:</b> 1:500 - 1:2000 <b>IHC:</b> 1:50 - 1:100 <b>IF/ICC:</b> 1:50 - 1:100
理论分子量	42kDa
实测分子量	43kDa
形式	Liquid
保存条件	Store at -20°C. Avoid freeze / thaw cycles. Buffer: PBS with 0.02% sodium azide,50% glycerol,pH7.3.
偶联物	Unconjugated
阳性对照	HeLa,HepG2,Jurkat,HL-60,SW620,Mouse testis,Rat lung
细胞定位	cytosol,extracellular region,nucleoplasm,nucleus
纯化	Affinity purification

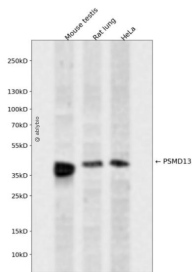
## 抗原信息

抗原信息	Recombinant fusion protein containing a sequence corresponding to amino acids 1-250 of human PSMD13 (NP_002808.3).
序列	MKDVPGFLLQSQNSGPGQPAVWHRLEELYTKKLWHQLTLQVLDVFQDPCFAQGDGLIKLYENFISEFEHRVNPLSLVEIILHVVRQMTDPNVALTFLEKTRKVKSSDEAVILCKTAIGALKLNIGDLQVTKETIEDVEEMLNNLPGVTSVHSRFDLSSKYYQTIGNHASYKDALRFLGCVDIKDLVPSEQQERAFTLGLAGLLGEGVFNFGELLMHPVLESLRNTDRQWLIDTLYAFNSGNVERFQT

## 靶点信息

研究背景	The 26S proteasome is a multicatalytic proteinase complex with a highly ordered structure composed of 2 complexes, a 20S core and a 19S regulator. The 20S core is composed of 4 rings of 28 non-identical sub units; 2 rings are composed of 7 alpha subunits and 2 rings are composed of 7 beta subunits. The 19S regulator is composed of a base, which contains 6 ATPase subunits and 2 non-ATPase subunits, and a lid, which contains up to 10 non-ATPase subunits. Proteasomes are distributed throughout eukaryotic cells at a high concentration and cleave peptides in an ATP/ubiquitin-dependent process in a non-lysosomal pathway. An essential function of a modified proteasome, the immunoproteasome, is the processing of class I MHC peptides. This gene encodes a non-ATPase subunit of the 19S regulator. Two transcripts encoding different isoforms have been described.
基因ID	5719
基因名	PSMD13
Swiss	Q9UNM6
别名	PSMD13;HSPC027;Rpn9;S11;p40.5

## 产品验证



Western blot analysis of PSMD13 expressed in Mouse testis,Rat lung,HeLa using PSMD13 Rabbit pAb at 1:1000. Secondary antibody: HRP Goat Anti-Rabbit IgG (H+L) at 1:5000. Lysates/proteins: 30ug per lane. Blocking buffer: 5% non-fat dry milk in TBST. Detection: ECL Enhanced Kit. Exposure time: 120s.

## 实验步骤

访问官网浏览详情: [www.ablybio.cn](http://www.ablybio.cn)