

KPNA6 Rabbit pAb

货号: **AYP12306**

产品信息

| | |
|-------|--|
| 反应 | Human,Mouse |
| 宿主 | Rabbit |
| 克隆性 | Polyclonal |
| 预测反应 | WB: Homo sapiens IP: Homo sapiens |
| 应用 | WB |
| 推荐浓度 | WB: 1:500 - 1:2000 |
| 理论分子量 | 60kDa |
| 实测分子量 | 60kDa |
| 形式 | Liquid |
| 保存条件 | Store at -20°C. Avoid freeze / thaw cycles. Buffer: PBS with 0.02% sodium azide,50% glycerol,pH7.3. |
| 偶联物 | Unconjugated |
| 阳性对照 | BT-474,SW620,U-251MG,Mouse testis |
| 细胞定位 | cytosol,nucleoplasm,nucleus |
| 纯化 | Affinity purification |

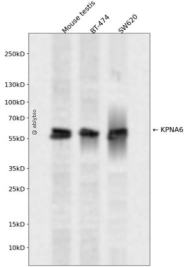
抗原信息

| | |
|------|--|
| 抗原信息 | Recombinant fusion protein containing a sequence corresponding to amino acids 277-536 of human KPNA 6 (NP_036448.1). |
| 序列 | SYLSDGPNEKIQAVIDSGVCRRLVELLMHNDYKVASPALRAVGNIVTGDDIQTQVILNCSALPCLLHLLSSPKESIRKEACWT ISNITAGNRAQIQAVIDANIFPVLIEILQKAEFRTRKEAAWAITNATSSGGTPEQIRYLVSLGCIKPLCDLLTVMDSKIVQVALNG LENILRLGEQEGKRSGSGVNPYCGLIEEAYGLDKIEFLQSHENQEIQKAFDLIEHYFGVEDDDSSLAPQVDETQQQFIFQQ PEAPMEGFQL |

靶点信息

| | |
|-------|---|
| 研究背景 | Nucleocytoplasmic transport, a signal- and energy-dependent process, takes place through nuclear pore complexes embedded in the nuclear envelope. The import of proteins containing a nuclear localization signal (NLS) requires the NLS import receptor, a heterodimer of importin alpha and beta subunits also known as karyopherins. Importin alpha binds the NLS-containing cargo in the cytoplasm and importin beta docks the complex at the cytoplasmic side of the nuclear pore complex. In the presence of nucleoside triphosphates and the small GTP binding protein Ran, the complex moves into the nuclear pore complex and the importin subunits dissociate. Importin alpha enters the nucleoplasm with its passenger protein and importin beta remains at the pore. The protein encoded by this gene is a member of the importin alpha family. |
| 基因ID | 23633 |
| 基因名 | KPNA6 |
| Swiss | O60684 |
| 别名 | KPNA6;IPOA7;KPNA7 |

产品验证



Western blot analysis of KPNA6 expressed in Mouse testis, BT-474, SW620 using KPNA6 Rabbit pAb at 1:1000. Secondary antibody: HRP Goat Anti-Rabbit IgG (H+L) at 1:5000. Lysates/proteins: 30ug per lane. Blocking buffer: 5% non-fat dry milk in TBST. Detection: ECL Enhanced Kit. Exposure time: 120s.

实验步骤

访问官网浏览详情: www.ablybio.cn