

CTSV Rabbit pAb

货号: **AYP12301**

产品信息

反应	Human,Mouse,Rat
宿主	Rabbit
克隆性	Polyclonal
预测反应	WB: Homo sapiens
应用	WB
推荐浓度	WB: 1:500 - 1:2000
理论分子量	37kDa
实测分子量	37kDa
形式	Liquid
保存条件	Store at -20°C. Avoid freeze / thaw cycles. Buffer: PBS with 0.02% sodium azide,50% glycerol,pH7.3.
偶联物	Unconjugated
阳性对照	HeLa,A-549,Mouse liver,Rat liver
细胞定位	Lysosome
纯化	Affinity purification

抗原信息

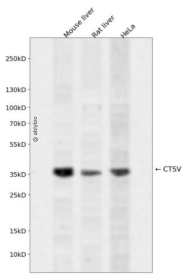
抗原信息	Recombinant fusion protein containing a sequence corresponding to amino acids 105-334 of human CTSV (NP_001324.2).
序列	VFREPLFLDLPKSVDRKKGYPVKNQKQCGSCWAFSATGALEGQMFRTGKLVSLSEQNLVDCSRPQGNQGCNNGG FMARAFQYVKENGGLDSEESYPYVAVDEICKYRPENSVANDTGFTVVAPGKEKALMKAVATVGPISVAMDAGHSSFQFYK SGIYFEPDCSSKNLDHGVLVVGYGFEGANSNNSKYWLKNSWGPEWGSNGYVKIAKDKNNHCGIATAASYPNV

靶点信息

研究背景	The protein encoded by this gene, a member of the peptidase C1 family, is a lysosomal cysteine protease that may play an important role in corneal physiology. This gene is expressed in colorectal and breast carcinomas but not in normal colon, mammary gland, or peritumoral tissues, suggesting a possible role for this gene in tumor processes. Alternatively spliced variants, encoding the same protein, have been identified.
------	---

基因ID	1515
基因名	CTSV
Swiss	O60911
别名	CTSV;CATL2;CTSL2;CTSU

产品验证



Western blot analysis of CTSV expressed in Mouse liver,Rat liver,HeLa using CTSV Rabbit pAb at 1:1000. Secondary antibody: HRP Goat Anti-Rabbit IgG (H+L) at 1:5000. Lysates/proteins: 30ug per lane. Blocking buffer: 5% non-fat dry milk in TBST. Detection: ECL Enhanced Kit. Exposure time: 120s.

实验步骤

访问官网浏览详情: www.ablybio.cn