

LRG1 Rabbit pAb

货号: **AYP12295**

产品信息

反应	Human,Mouse,Rat
宿主	Rabbit
克隆性	Polyclonal
预测反应	IF: Mus musculus
应用	WB IF/ICC
推荐浓度	WB: 1:500 - 1:1000 IF/ICC: 1:50 - 1:200
理论分子量	38kDa
实测分子量	45KDa
形式	Liquid
保存条件	Store at -20°C. Avoid freeze / thaw cycles. Buffer: PBS with 0.05% proclin300,50% glycerol,pH7.3.
偶联物	Unconjugated
阳性对照	Human plasma
细胞定位	Secreted
纯化	Affinity purification

抗原信息

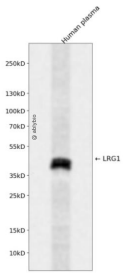
抗原信息	Recombinant fusion protein containing a sequence corresponding to amino acids 36-347 of human LRG1 (NP_443204.1).
序列	VTLSPKDCQVFRSDHGSSISCQPPAEIPGYLPADTVHLAVEFFNLTHLPANLLQGASKLQELHLSSNGLESLSPEFLRPVPQ LRVLDLTRNALTGLPPGLFQASATLDTLVLKENQLEVLVSWLHGLKALGHLDLSGNRLRKLPPGLLANFTLLRDLGENQ LETLPDLLRGPLQLERLHLEGNKLVGKDLLLPQDLRYLFLNGNKLARVAAGAFQGLRQLDMLDLSNNSLASVPEGLW ASLGQPNWDMRDGFDISGNPWICDQNLSDLYRWLQAQKDKMFSQNDTRCAGPEAVKQGQTLAVAKSQ

靶点信息

研究背景	The leucine-rich repeat (LRR) family of proteins, including LRG1, have been shown to be involved in prote in-protein interaction, signal transduction, and cell adhesion and development. LRG1 is expressed during granulocyte differentiation (O'Donnell et al., 2002 [PubMed 12223515]).
------	--

基因ID	116844
基因名	LRG1
Swiss	P02750
别名	LRG1;HMFT1766;LRG

产品验证



Western blot analysis of LRG1 expressed in Human plasma using LRG1 Rabbit pAb at 1:1000. Secondary antibody: HRP Goat Anti-Rabbit IgG (H+L) at 1:5000. Lysates/proteins: 30ug per lane. Blocking buffer: 5% non-fat dry milk in TBST. Detection: ECL Enhanced Kit. Exposure time: 120s.

实验步骤

访问官网浏览详情: www.ablybio.cn