

# NOTCH4 Rabbit pAb

货号: AYP12285

## 产品信息

反应	Human,Mouse,Rat
宿主	Rabbit
克隆性	Polyclonal
预测反应	<b>WB:</b> Mus musculus <b>IHC:</b> Homo sapiens
应用	<a href="#">WB</a> <a href="#">IF/ICC</a>
推荐浓度	<b>WB:</b> 1:500 - 1:2000 <b>IF/ICC:</b> 1:50 - 1:200
理论分子量	39kDa/61kDa/209kDa
实测分子量	88kDa
形式	Liquid
保存条件	Store at -20°C. Avoid freeze / thaw cycles. Buffer: PBS with 0.02% sodium azide,50% glycerol,pH7.3.
偶联物	Unconjugated
阳性对照	Mouse kidney
细胞定位	Cell membrane,Nucleus,Single-pass type I membrane protein
纯化	Affinity purification

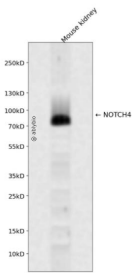
## 抗原信息

抗原信息	Recombinant fusion protein containing a sequence corresponding to amino acids 1824-2003 of human N OTCH4 (NP_004548.3).
序列	PPEARHKATPGREAGPFPRARTVSVSVPPHGGGALPRCRTLSAGAGPRGGGACLQARTWSVDLAARGGGAYSHCRSLS GVGAGGGTPRGRRFSAAGMRGPRNPAPMRGRYGVAAAGRGGRVSTDDWPCDWVALGACGSASNIPIPPPCLTPSPERG SPQLDCGPPALQEMPINQGGEGKK

## 靶点信息

研究背景	This gene encodes a member of the NOTCH family of proteins. Members of this Type I transmembrane protein family share structural characteristics including an extracellular domain consisting of multiple epidermal growth factor-like (EGF) repeats, and an intracellular domain consisting of multiple different domain types. Notch signaling is an evolutionarily conserved intercellular signaling pathway that regulates interactions between physically adjacent cells through binding of Notch family receptors to their cognate ligands. The encoded preprotein is proteolytically processed in the trans-Golgi network to generate two polypeptide chains that heterodimerize to form the mature cell-surface receptor. This receptor may play a role in vascular, renal and hepatic development. Mutations in this gene may be associated with schizophrenia. Alternative splicing results in multiple transcript variants, at least one of which encodes an isoform that is proteolytically processed.
基因ID	4855
基因名	NOTCH4
Swiss	Q99466
别名	NOTCH4;INT3;notch 4

## 产品验证



Western blot analysis of NOTCH4 expressed in Mouse kidney using NOTCH4 Rabbit pAb at 1:1000. Secondary antibody: HRP Goat Anti-Rabbit IgG (H+L) at 1:5000. Lysates/proteins: 30ug per lane. Blocking buffer: 5% non-fat dry milk in TBST. Detection: ECL Enhanced Kit. Exposure time: 120s.

## 实验步骤

访问官网浏览详情: [www.ablybio.cn](http://www.ablybio.cn)