

GAS6 Rabbit pAb

货号: **AYP12280**

产品信息

反应	Human,Mouse
宿主	Rabbit
克隆性	Polyclonal
预测反应	WB: Homo sapiens , Mus musculus
应用	WB IHC
推荐浓度	WB: 1:500 - 1:2000 IHC: 1:50 - 1:100
理论分子量	41kDa/44kDa/68kDa/74kDa/79kDa
实测分子量	69kDa
形式	Liquid
保存条件	Store at -20°C. Avoid freeze / thaw cycles. Buffer: PBS with 0.02% sodium azide,50% glycerol,pH7.3.
偶联物	Unconjugated
阳性对照	HeLa,NCI-H460,HT-1080,SW620,DU145
细胞定位	Secreted
纯化	Affinity purification

抗原信息

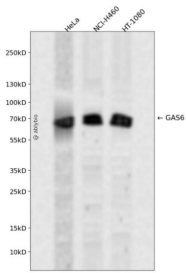
抗原信息	Recombinant fusion protein containing a sequence corresponding to amino acids 100-300 of human GAS 6 (NP_000811.1).
序列	GSPYTKNSGFATCVQNLDPDQCTPNPCDRKGTQACQDLMGNFFCLCKAGWGGRLCDKDVNECSQENGGCLQICHNKPG SFHCSCSHSGFELSSDGRTQCQDIDECADSEACGEARCKNLPGSYSCLCDEGFAYSSQEKACRDVDECLQGRCEQVCVNSP GSYTCHCDGRGGLKLSQDMTDCEDILPCVPFVSAKSVKSLYLGRM

靶点信息

研究背景	This gene encodes a gamma-carboxyglutamic acid (Gla)-containing protein thought to be involved in the stimulation of cell proliferation. This gene is frequently overexpressed in many cancers and has been implicated as an adverse prognostic marker. Elevated protein levels are additionally associated with a variety of disease states, including venous thromboembolic disease, systemic lupus erythematosus, chronic renal failure, and preeclampsia.
------	---

基因ID	2621
基因名	GAS6
Swiss	Q14393
别名	GAS6;AXLLG;AXSF

产品验证



Western blot analysis of GAS6 expressed in HeLa, NCI-H460, HT-1080 using GAS6 Rabbit pAb at 1:1000. Secondary antibody: HRP Goat Anti-Rabbit IgG (H+L) at 1:5000. Lysates/proteins: 30ug per lane. Blocking buffer: 5% non-fat dry milk in TBST. Detection: ECL Enhanced Kit. Exposure time: 120s.

实验步骤

访问官网浏览详情: www.ablybio.cn