

KPNB1 Rabbit pAb

货号: AYP12274

产品信息

| | |
|-------|--|
| 反应 | Human,Mouse,Rat |
| 宿主 | Rabbit |
| 克隆性 | Polyclonal |
| 预测反应 | WB: Homo sapiens , Mus musculus |
| 应用 | WB IHC IF/ICC |
| 推荐浓度 | WB: 1:1000 - 1:5000 IHC: 1:50 - 1:100 IF/ICC: 1:50 - 1:200 |
| 理论分子量 | 81kDa/97kDa |
| 实测分子量 | 102KDa |
| 形式 | Liquid |
| 保存条件 | Store at -20°C. Avoid freeze / thaw cycles. Buffer: PBS with 0.05% proclin300,50% glycerol,pH7.3. |
| 偶联物 | Unconjugated |
| 阳性对照 | K-562,HepG2,HeLa,NIH/3T3,C6,PC-12 |
| 细胞定位 | Cytoplasm,Nucleus envelope |
| 纯化 | Affinity purification |

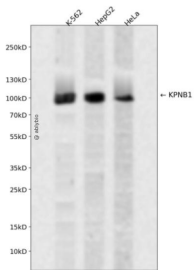
抗原信息

| | |
|------|--|
| 抗原信息 | A synthetic peptide corresponding to a sequence within amino acids 250-350 of human KPNB1 (NP_002256.2). |
| 序列 | QYMETYMGPALFAITIEAMKSDIDEVALQGIEFWSNVCDEEMDLAIEASEAAEQGRPPEHTSKFYAKGALQYLVPILTQTLTKQDENDDDDDWNPKAAGV |

靶点信息

| | |
|-------|--|
| 研究背景 | Nucleocytoplasmic transport, a signal- and energy-dependent process, takes place through nuclear pore complexes embedded in the nuclear envelope. The import of proteins containing a nuclear localization signal (NLS) requires the NLS import receptor, a heterodimer of importin alpha and beta subunits also known as karyopherins. Importin alpha binds the NLS-containing cargo in the cytoplasm and importin beta docks the complex at the cytoplasmic side of the nuclear pore complex. In the presence of nucleoside triphosphates and the small GTP binding protein Ran, the complex moves into the nuclear pore complex and the importin subunits dissociate. Importin alpha enters the nucleoplasm with its passenger protein and importin beta remains at the pore. Interactions between importin beta and the FG repeats of nucleoporins are essential in translocation through the pore complex. The protein encoded by this gene is a member of the importin beta family. Two transcript variants encoding different isoforms have been found for this gene. |
| 基因ID | 3837 |
| 基因名 | KPNB1 |
| Swiss | Q14974 |
| 别名 | KPNB1;IMB1;IPO1;IPOB;Impnb;NTF97 |

产品验证



Western blot analysis of KPNB1 expressed in K-562, HepG2, HeLa using KPNB1 Rabbit pAb at 1:1000. Secondary antibody: HRP Goat Anti-Rabbit IgG (H+L) at 1:5000. Lysates/proteins: 30ug per lane. Blocking buffer: 5% non-fat dry milk in TBST. Detection: ECL Enhanced Kit. Exposure time: 120s.

实验步骤

访问官网浏览详情: www.ablybio.cn