

— ABLYBIO, Help Your Research



PYGM Rabbit pAb

货号: **AYP12270**

产品信息

反应	Human,Mouse,Rat
宿主	Rabbit
克隆性	Polyclonal
预测反应	WB: Rattus norvegicus IHC: Mus musculus
应用	WB
推荐浓度	WB: 1:500 - 1:2000
理论分子量	87kDa/97kDa
实测分子量	100kDa
形式	Liquid
保存条件	Store at -20°C. Avoid freeze / thaw cycles. Buffer: PBS with 0.01% thiomersal,50% glycerol,pH7.3.
偶联物	Unconjugated
阳性对照	Mouse skeletal muscle,Mouse brain,Mouse lung,Rat skeletal muscle
细胞定位	cytoplasm,cytosol,extracellular exosome
纯化	Affinity purification

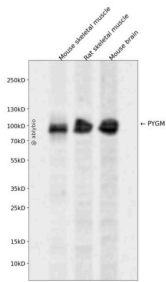
抗原信息

抗原信息	Recombinant fusion protein containing a sequence corresponding to amino acids 713-842 of human PYGM (NP_005600.1).
------	--

靶点信息

研究背景	This gene encodes a muscle enzyme involved in glycogenolysis. Highly similar enzymes encoded by different genes are found in liver and brain. Mutations in this gene are associated with McArdle disease (myophosphorylase deficiency), a glycogen storage disease of muscle. Alternative splicing results in multiple transcript variants.
基因ID	5837
基因名	PYGM
Swiss	P11217 (https://www.uniprot.org/uniprotkb/P11217/entry)
别名	PYGM,PYGM Rabbit pAb,Myophosphorylase

产品验证



Western blot analysis of PYGM expressed in Mouse skeletal muscle, Rat skeletal muscle, Mouse brain using PYGM Rabbit pAb at 1:1000. Secondary antibody: HRP Goat Anti-Rabbit IgG (H+L) at 1:5000. Lysates/proteins: 30ug per lane. Blocking buffer: 5% non-fat dry milk in TBST. Detection: ECL Enhanced Kit. Exposure time: 120s.

实验步骤

访问官网浏览详情: www.ablybio.cn (<https://www.ablybio.cn/>www.ablybio.cn)