

Phospho-C/EBPB-T235 Rabbit pAb

货号: **AYP12258**

产品信息

反应	Human,Mouse
宿主	Rabbit
克隆性	Polyclonal
预测反应	WB: Homo sapiens , Sus scrofa
应用	WB
推荐浓度	WB: 1:500 - 1:1000
理论分子量	36kDa
实测分子量	38KDa
形式	Liquid
保存条件	Store at -20°C. Avoid freeze / thaw cycles. Buffer: PBS with 0.01% thiomersal,50% glycerol,pH7.3.
偶联物	Unconjugated
阳性对照	NIH/3T3
细胞定位	Cytoplasm,Nucleus
纯化	Affinity purification

抗原信息

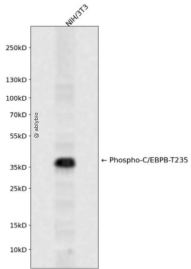
抗原信息	A synthetic phosphorylated peptide around T235 of human C/EBPB (NP_005185.2).
序列	PGTPS

靶点信息

研究背景	This intronless gene encodes a transcription factor that contains a basic leucine zipper (bZIP) domain. The encoded protein functions as a homodimer but can also form heterodimers with CCAAT/enhancer-binding proteins alpha, delta, and gamma. Activity of this protein is important in the regulation of genes involved in immune and inflammatory responses, among other processes. The use of alternative in-frame AUG start codons results in multiple protein isoforms, each with distinct biological functions.
基因ID	1051

基因名	CEBPB
Swiss	P17676
别名	C/EBP-beta;IL6DBP;NF-IL6;TCF5;CEBP beta;CEBPB

产品验证



Western blot analysis of Phospho-C/EBPB-T235 expressed in NIH/3T3 using Phospho-C/EBPB-T235 Rabbit pAb at 1:1000. Secondary antibody: HRP Goat Anti-Rabbit IgG (H+L) at 1:5000. Lysates/proteins: 30ug per lane. Blocking buffer: 5% non-fat dry milk in TBST. Detection: ECL Enhanced Kit. Exposure time: 120s.

实验步骤

访问官网浏览详情: www.ablybio.cn