

# Phospho-INSR-Y1150/IGF1R-Y1135 Rabbit pAb

货号: **AYP12255**

## 产品信息

反应	Human,Mouse,Rat
宿主	Rabbit
克隆性	Polyclonal
预测反应	<b>WB:</b> Mus musculus , Rattus norvegicus
应用	<a href="#">WB</a>
推荐浓度	<b>WB:</b> 1:500 - 1:2000
理论分子量	154kDa/155kDa/156kDa
实测分子量	80kDa
形式	Liquid
保存条件	Store at -20°C. Avoid freeze / thaw cycles. Buffer: PBS with 0.02% sodium azide,50% glycerol,pH7.3.
偶联物	Unconjugated
阳性对照	293,HepG2
细胞定位	cytoplasm,nucleus,plasma membrane,T-tubule
纯化	Affinity purification

## 抗原信息

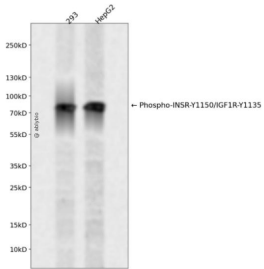
抗原信息	A synthetic phosphorylated peptide around Y1150 of human IGF1RINSR (NP_001073285.1).
序列	TDYYR

## 靶点信息

研究背景	This receptor binds insulin-like growth factor with a high affinity. It has tyrosine kinase activity. The insulin-like growth factor I receptor plays a critical role in transformation events. Cleavage of the precursor generates alpha and beta subunits. It is highly overexpressed in most malignant tissues where it functions as an anti-apoptotic agent by enhancing cell survival. Alternatively spliced transcript variants encoding distinct isoforms have been found for this gene. [provided by RefSeq, May 2014]
基因ID	3480,3643

基因名	IGF1R,INSR
Swiss	P08069,P06213
别名	IGF1R/INSR

## 产品验证



Western blot analysis of Phospho-INSR-Y1150/IGF1R-Y1135 expressed in 293,HepG2 using Phospho-INSR-Y1150/IGF1R-Y1135 Rabbit pAb at 1:1000. Secondary antibody: HRP Goat Anti-Rabbit IgG (H+L) at 1:5000. Lysates/proteins: 30ug per lane. Blocking buffer: 5% non-fat dry milk in TBS. Detection: ECL Enhanced Kit. Exposure time: 120s.

## 实验步骤

访问官网浏览详情: [www.ablybio.cn](http://www.ablybio.cn)