

PSME3 Rabbit pAb

货号: **AYP12249**

产品信息

反应	Human,Mouse,Rat
宿主	Rabbit
克隆性	Polyclonal
预测反应	WB: Homo sapiens IHC: Homo sapiens
应用	WB IHC IF/ICC
推荐浓度	WB: 1:1000 - 1:2000 IHC: 1:50 - 1:200 IF/ICC: 1:50 - 1:200
理论分子量	29kDa/30kDa
实测分子量	35kDa
形式	Liquid
保存条件	Store at -20°C. Avoid freeze / thaw cycles. Buffer: PBS with 0.01% thiomersal,50% glycerol,pH7.3.
偶联物	Unconjugated
阳性对照	293T,Raji,Jurkat,A-549,Mouse spleen,Mouse brain
细胞定位	Cytoplasm,Nucleus
纯化	Affinity purification

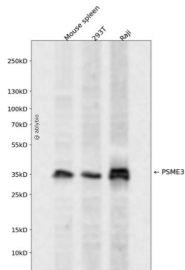
抗原信息

抗原信息	A synthetic peptide corresponding to a sequence within amino acids 100 to the C-terminus of human PSM E3 (NP_005780.2).
序列	KVFVMPNGMLKSNQQLVDIIEKVKPEIRLLIEKCNTVKMWWQLLIPRIEDGNNFGVSIQEETVAELRTVESEAASYLDQISRYY ITRAKLVSKI AKYPHVEDYRRTVTEIDEKEYISLRLLIISLRNQYVTLHDMILKNIEKIKRPRSSNAETLY

靶点信息

研究背景	The 26S proteasome is a multicatalytic proteinase complex with a highly ordered structure composed of 2 complexes, a 20S core and a 19S regulator. The 20S core is composed of 4 rings of 28 non-identical sub units; 2 rings are composed of 7 alpha subunits and 2 rings are composed of 7 beta subunits. The 19S regulator is composed of a base, which contains 6 ATPase subunits and 2 non-ATPase subunits, and a lid, which contains up to 10 non-ATPase subunits. Proteasomes are distributed throughout eukaryotic cells at a high concentration and cleave peptides in an ATP/ubiquitin-dependent process in a non-lysosomal pathway. An essential function of a modified proteasome, the immunoproteasome, is the processing of class I MHC peptides. The immunoproteasome contains an alternate regulator, referred to as the 11S regulator or PA28, that replaces the 19S regulator. Three subunits (alpha, beta and gamma) of the 11S regulator have been identified. This gene encodes the gamma subunit of the 11S regulator. Six gamma subunits combine to form a homohexameric ring. Alternate splicing results in multiple transcript variants.
基因ID	10197
基因名	PSME3
Swiss	P61289
别名	PSME3;HEL-S-283;Ki;PA28-gamma;PA28G;PA28gamma;REG-GAMMA

产品验证



Western blot analysis of PSME3 expressed in Mouse spleen, 293T, Raji using PSME3 Rabbit pAb at 1:1000. Secondary antibody: HRP Goat Anti-Rabbit IgG (H+L) at 1:5000. Lysates/proteins: 30ug per lane. Blocking buffer: 5% non-fat dry milk in TBST. Detection: ECL Enhanced Kit. Exposure time: 120s.

实验步骤

访问官网浏览详情: www.ablybio.cn