

Cathepsin D Rabbit pAb

货号: **AYP12244**

产品信息

反应	Human,Mouse,Rat
宿主	Rabbit
克隆性	Polyclonal
预测反应	WB: Mus musculus , Bos taurus
应用	WB IHC
推荐浓度	WB: 1:100 - 1:500 IHC: 1:50 - 1:200
理论分子量	44kDa
实测分子量	46KDa
形式	Liquid
保存条件	Store at -20°C. Avoid freeze / thaw cycles. Buffer: PBS with 0.01% thiomersal,50% glycerol,pH7.3.
偶联物	Unconjugated
阳性对照	SK-BR-3,Rat lung
细胞定位	Lysosome,Melanosome,Secreted,extracellular space
纯化	Affinity purification

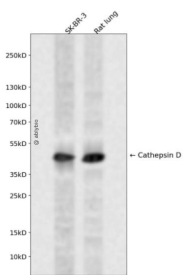
抗原信息

抗原信息	Recombinant fusion protein containing a sequence corresponding to amino acids 21-249 of human Cathepsin D (NP_001900.1).
序列	LVRIPLHKFTSIRRTMSEVGGSVEDLIAKGPVSKYSQAVPAVTEGPIPEVLKNYMDAQYYGEIGIGTPPQCFTVVFDTGSSNLWVPSIHCKLLDIACWIHHKYNSDKSSTYVKNGTSTFDIHYGSGSLSGYLSQDTVSVPCQSASSASALGGVKVERQVFGAATKQPGITFIAAKFDGILGMAYPRISVNNVLPVFDNLMQQKLVDQNIFFYLSRDPDAQPGGELMLGG

靶点信息

研究背景	This gene encodes a member of the A1 family of peptidases. The encoded preproprotein is proteolytically processed to generate multiple protein products. These products include the cathepsin D light and heavy chains, which heterodimerize to form the mature enzyme. This enzyme exhibits pepsin-like activity and plays a role in protein turnover and in the proteolytic activation of hormones and growth factors. Mutations in this gene play a causal role in neuronal ceroid lipofuscinosis-10 and may be involved in the pathogenesis of several other diseases, including breast cancer and possibly Alzheimer's disease.
基因ID	1509
基因名	CTSD
Swiss	P07339
别名	CLN10;CPSD;HEL-S-130P;Cathepsin D;CTSD

产品验证



Western blot analysis of Cathepsin D expressed in SK-BR-3, Rat lung using Cathepsin D Rabbit pAb at 1:1000. Secondary antibody: HRP Goat Anti-Rabbit IgG (H+L) at 1:5000. Lysates/proteins: 30ug per lane. Blocking buffer: 5% non-fat dry milk in TBST. Detection: ECL Enhanced Kit. Exposure time: 120s.

实验步骤

访问官网浏览详情: www.ablybio.cn