

LSM14A Rabbit pAb

货号: **AYP12213**

产品信息

反应	Human,Mouse,Rat
宿主	Rabbit
克隆性	Polyclonal
预测反应	IHC: Rattus norvegicus WB: Mus musculus
应用	WB IF/ICC
推荐浓度	WB: 1:500 - 1:2000 IF/ICC: 1:50 - 1:200
理论分子量	46kDa/50kDa
实测分子量	50kDa
形式	Liquid
保存条件	Store at -20°C. Avoid freeze / thaw cycles. Buffer: PBS with 0.01% thiomersal,50% glycerol,pH7.3.
偶联物	Unconjugated
阳性对照	Mouse brain,Rat liver
细胞定位	Cytoplasm,P-body
纯化	Affinity purification

抗原信息

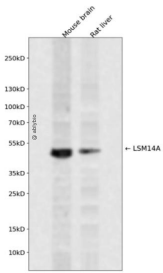
抗原信息	A synthetic peptide corresponding to a sequence within amino acids 1-100 of human LSM14A (NP_001107565.1).
序列	MSGGTPYIGSKISLISKAEIRYEGILYTIDTENSTVALAKVRSFGTEDRPTDRPIPPRDEVFEYIIFRGSDIKDLTVCEPPKQCS LPQDPAIVQSSLGS

靶点信息

研究背景	Sm-like proteins were identified in a variety of organisms based on sequence homology with the Sm protein family (see SNRPD2; 601061). Sm-like proteins contain the Sm sequence motif, which consists of 2 regions separated by a linker of variable length that folds as a loop. The Sm-like proteins are thought to form a stable heteromer present in tri-snRNP particles, which are important for pre-mRNA splicing.[supplied by OMIM, Mar 2008]
------	--

基因ID	26065
基因名	LSM14A
Swiss	Q8ND56
别名	LSM14A;C19orf13;FAM61A;RAP55;RAP55A

产品验证



Western blot analysis of LSM14A expressed in Mouse brain,Rat liver using LSM14A Rabbit pAb at 1:1000. Secondary antibody: HRP Goat Anti-Rabbit IgG (H+L) at 1:5000. Lysates/proteins: 30ug per lane. Blocking buffer: 5% non-fat dry milk in TBST. Detection: ECL Enhanced Kit. Exposure time: 120s.

实验步骤

访问官网浏览详情: www.ablybio.cn