

— ABLYBIO, Help Your Research



Phospho-Fyn-S21 Rabbit pAb

货号: **AYP12204**

产品信息

反应	Human
宿主	Rabbit
克隆性	Polyclonal
预测反应	WB: Homo sapiens IHC: Homo sapiens
应用	WB
推荐浓度	WB: 1:500 - 1:2000
理论分子量	54kDa/60kDa
实测分子量	60kDa
形式	Liquid
保存条件	Store at -20°C. Avoid freeze / thaw cycles. Buffer: PBS with 0.02% sodium azide, 50% glycerol, pH7.3.
偶联物	Unconjugated
阳性对照	A-431
细胞定位	Cell membrane, Cytoplasm, Nucleus
纯化	Affinity purification

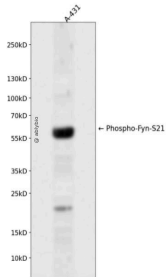
抗原信息

抗原信息	A synthetic phosphorylated peptide around S21 of human Phospho-Fyn-S21 (NP_002028.1).
------	---

靶点信息

研究背景	This gene is a member of the protein-tyrosine kinase oncogene family. It encodes a membrane-associated tyrosine kinase that has been implicated in the control of cell growth. The protein associates with the p 85 subunit of phosphatidylinositol 3-kinase and interacts with the fyn-binding protein. Alternatively spliced transcript variants encoding distinct isoforms exist.
基因ID	2534
基因名	FYN
Swiss	P06241 (https://www.uniprot.org/uniprotkb/P06241/entry)
别名	FYN,SLK,SYN,p59-FYN,Phospho-Fyn-S21 Rabbit pAb,Proto-oncogene Syn,Proto-oncogene c-Fyn,Src-like kinase

产品验证



Western blot analysis of Phospho-Fyn-S21 expressed in A-431 using Phospho-Fyn-S21 Rabbit pAb at 1:1000. Secondary antibody: HRP Goat Anti-Rabbit IgG (H+L) at 1:5000. Lysates/proteins: 30ug per lane. Blocking buffer: 5% non-fat dry milk in TBST. Detection: ECL Enhanced Kit. Exposure time: 120s.

实验步骤

访问官网浏览详情: www.ablybio.cn (<https://www.ablybio.cn/www.ablybio.cn>)