

# Perforin Rabbit pAb

货号: **AYP12195**

## 产品信息

反应	Human,Mouse,Rat
宿主	Rabbit
克隆性	Polyclonal
预测反应	<b>WB:</b> HepG2 , Mus musculus , Homo sapiens
应用	<a href="#">WB</a> <a href="#">IHC</a> <a href="#">IF/ICC</a>
推荐浓度	<b>WB:</b> 1:500 - 1:1000 <b>IHC:</b> 1:50 - 1:200 <b>IF/ICC:</b> 1:50 - 1:200
理论分子量	61kDa
实测分子量	70KDa
形式	Liquid
保存条件	Store at -20°C. Avoid freeze / thaw cycles. Buffer: PBS with 0.01% thiomersal,50% glycerol,pH7.3.
偶联物	Unconjugated
阳性对照	NIH/3T3,Rat liver
细胞定位	Cell membrane,Cytoplasmic granule lumen,Endosome lumen,Multi-pass membrane protein,Secreted
纯化	Affinity purification

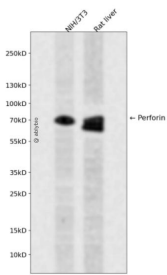
## 抗原信息

抗原信息	Recombinant fusion protein containing a sequence corresponding to amino acids 280-555 of human Perforin (NP_001076585.1).
序列	EEKKKKHKMTASFHQTYRERHSEVVGHHHTSINDLLFGIQAGPEQYSAWVNSLPGSPGLVDYTLLEPLHVLLDSQDPRREA LRRALSQYLTDRARWRDCSRPCPPGRQKSPRDPCQCVCHGSAVTTQDCCPRQRGLAQLEVTFIQAWGLWGDWFTATD AYVKLFFGGQELRTSTVWDNNNPIWSVRLDFGDVLLATGGPLRLQVWDQDSGRDDDLLGTCDQAPKSGSHEVRCNLN HGHLKFRYHARCLPHLGGGTCLDYVPQMLLGEPPGNRSGAVW

## 靶点信息

研究背景	The protein encoded by this gene has structural and functional similarities to complement component 9 (C9). Like C9, this protein creates transmembrane tubules and is capable of lysing non-specifically a variety of target cells. This protein is one of the main cytolytic proteins of cytolytic granules, and it is known to be a key effector molecule for T-cell- and natural killer-cell-mediated cytotoxicity. Defects in this gene cause familial hemophagocytic lymphohistiocytosis type 2 (HPLH2), a rare and lethal autosomal recessive disorder of early childhood. Alternative splicing results in multiple transcript variants encoding the same protein.
基因ID	5551
基因名	PRF1
Swiss	P14222
别名	PRF1;FLH2;HPLH2;P1;PFN1;PFP;perforin-1;Perforin

## 产品验证



Western blot analysis of Perforin expressed in NIH/3T3, Rat liver using Perforin Rabbit pAb at 1:1000. Secondary antibody: HRP Goat Anti-Rabbit IgG (H+L) at 1:5000. Lysates/proteins: 30ug per lane. Blocking buffer: 5% non-fat dry milk in TBST. Detection: ECL Enhanced Kit. Exposure time: 120s.

## 实验步骤

访问官网浏览详情: [www.ablybio.cn](http://www.ablybio.cn)