

CDC25A Rabbit pAb

货号: **AYP12188**

产品信息

反应	Human,Mouse,Rat
宿主	Rabbit
克隆性	Polyclonal
预测反应	WB: Human , Homo sapiens
应用	WB IHC IF/ICC
推荐浓度	WB: 1:500 - 1:1000 IHC: 1:50 - 1:200 IF/ICC: 1:50 - 1:200
理论分子量	54kDa/59kDa
实测分子量	70KDa
形式	Liquid
保存条件	Store at -20°C. Avoid freeze / thaw cycles. Buffer: PBS with 0.01% thiomersal,50% glycerol,pH7.3.
偶联物	Unconjugated
阳性对照	HeLa,Raji,Mouse liver,Mouse testis,Rat liver,Rat testis
细胞定位	cytoplasm,cytosol,nucleoplasm,nucleus
纯化	Affinity purification

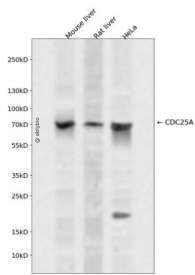
抗原信息

抗原信息	Recombinant fusion protein containing a sequence corresponding to amino acids 86-328 of CDC25A (NP_001780.2).
序列	LDSPGPLDSKENLENPMRRIHSLPQKLLGCSPALKRSHSDSLDHDIFQLIDPDENKENEAFEFKPKVPRVPSRGCLHSHGLQ EGKDLFTQRQNSAPARMLSSNERDSSEPGNFIFLFTQSPVTATLSDEDDGFVDLLDGENLKNEEETPSCMASLWTAPLV MRTTNLDNRCKLFDSPSLCSSSTRSVLKRPERSQEESPPGSTKRRKSMGASPKESTNPEKAHETLHQSLSLASSPKGIE N

靶点信息

研究背景	CDC25A is a member of the CDC25 family of phosphatases. CDC25A is required for progression from G1 to the S phase of the cell cycle. It activates the cyclin-dependent kinase CDC2 by removing two phosphate groups. CDC25A is specifically degraded in response to DNA damage, which prevents cells with chromosomal abnormalities from progressing through cell division. CDC25A is an oncogene, although its exact role in oncogenesis has not been demonstrated. Two transcript variants encoding different isoforms have been found for this gene.
基因ID	993
基因名	CDC25A
Swiss	P30304
别名	CDC25A;CDC25A2

产品验证



Western blot analysis of CDC25A expressed in Mouse liver, Rat liver, HeLa using CDC25A Rabbit pAb at 1:1000. Secondary antibody: HRP Goat Anti-Rabbit IgG (H+L) at 1:5000. Lysates/proteins: 30ug per lane. Blocking buffer: 5% non-fat dry milk in TBST. Detection: ECL Enhanced Kit. Exposure time: 120s.

实验步骤

访问官网浏览详情: www.ablybio.cn