

SLC22A6 Rabbit pAb

货号: **AYP12177**

产品信息

反应	Human,Rat
宿主	Rabbit
克隆性	Polyclonal
预测反应	WB: HUVEC , Mus musculus , Homo sapiens
应用	WB
推荐浓度	WB: 1:500 - 1:1000
理论分子量	55kDa/57kDa/60kDa/61kDa
实测分子量	62KDa
形式	Liquid
保存条件	Store at -20°C. Avoid freeze / thaw cycles. Buffer: PBS with 0.02% sodium azide,50% glycerol,pH7.3.
偶联物	Unconjugated
阳性对照	HCT116,Rat liver,Rat kidney
细胞定位	Cell membrane,Multi-pass membrane protein
纯化	Affinity purification

抗原信息

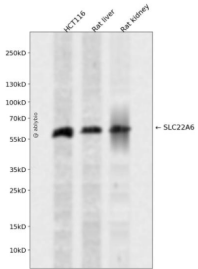
抗原信息	Recombinant fusion protein containing a sequence corresponding to amino acids 31-135 of human SLC22 A6 (Q4U2R8).
序列	MASHNTLQNFTAAIPTHHCRPPADANLSKNGGLEWVLPDRQGQPESCLRFTSPQWGLPFLNGTEANGTGATEPCTDG WIYDNSTFPSTIVTEWDLVCSHRALRQ

靶点信息

研究背景	The protein encoded by this gene is involved in the sodium-dependent transport and excretion of organic anions, some of which are potentially toxic. The encoded protein is an integral membrane protein and may be localized to the basolateral membrane. Four transcript variants encoding four different isoforms have been found for this gene.
基因ID	9356

基因名	SLC22A6
Swiss	Q4U2R8
别名	SLC22A6;HOAT1;OAT1;PAHT;ROAT1

产品验证



Western blot analysis of SLC22A6 expressed in HCT116,Rat liver,Rat kidney using SLC22A6 Rabbit pAb at 1:1000. Secondary antibody: HRP Goat Anti-Rabbit IgG (H+L) at 1:5000. Lysates/proteins: 30ug per lane. Blocking buffer: 5% non-fat dry milk in TBST. Detection: ECL Enhanced Kit. Exposure time: 120s.

实验步骤

访问官网浏览详情: www.ablybio.cn