

SELE Rabbit pAb

货号: **AYP12173**

产品信息

反应	Human,Mouse,Rat
宿主	Rabbit
克隆性	Polyclonal
预测反应	WB: HUVEC , Homo sapiens IF: Homo sapiens
应用	WB
推荐浓度	WB: 1:500 - 1:1000
理论分子量	66kDa
实测分子量	67KDa
形式	Liquid
保存条件	Store at -20°C. Avoid freeze / thaw cycles. Buffer: PBS with 0.05% proclin300,50% glycerol,pH7.3.
偶联物	Unconjugated
阳性对照	SK-BR-3
细胞定位	Cell membrane,Single-pass type I membrane protein
纯化	Affinity purification

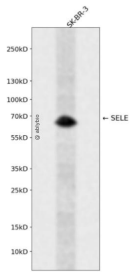
抗原信息

抗原信息	Recombinant fusion protein containing a sequence corresponding to amino acids 22-230 of human SELE (NP_000441.2).
序列	WSYNTSTEAMTYDEASAYCQQRythlVAIQNKEEIEYLNSILSYSPSYWIGIRKVNNVVWVGTQKPLTEEAKNWAPGEP NNRQKDEDCVEIYIKREKDVGMWNDERCSKKKLALCYTAACNTNTSCSGHGECVETINNYTCKCDPGFSGLKCEQIVNCTA LESPEHGSLVCSHPLGNFSYNSSCSISCDRGLPSSMETMQCMSSGEW

靶点信息

研究背景	The protein encoded by this gene is found in cytokine-stimulated endothelial cells and is thought to be responsible for the accumulation of blood leukocytes at sites of inflammation by mediating the adhesion of cells to the vascular lining. It exhibits structural features such as the presence of lectin- and EGF-like domains followed by short consensus repeat (SCR) domains that contain 6 conserved cysteine residues. These proteins are part of the selectin family of cell adhesion molecules. Adhesion molecules participate in the interaction between leukocytes and the endothelium and appear to be involved in the pathogenesis of atherosclerosis.
基因ID	6401
基因名	SELE
Swiss	P16581
别名	SELE;CD62E;ELAM;ELAM1;ESEL;LECAM2

产品验证



Western blot analysis of SELE expressed in SK-BR-3 using SELE Rabbit pAb at 1:1000. Secondary antibody : HRP Goat Anti-Rabbit IgG (H+L) at 1:5000. Lysates/proteins: 30ug per lane. Blocking buffer: 5% non-fat dry milk in TBST. Detection: ECL Enhanced Kit. Exposure time: 120s.

实验步骤

访问官网浏览详情: www.ablybio.cn