

MT-ND2 Rabbit pAb

货号: **AYP12171**

产品信息

反应	Mouse,Rat
宿主	Rabbit
克隆性	Polyclonal
预测反应	WB: Mouse muscle , Mus musculus , Sus scrofa
应用	WB
推荐浓度	WB: 1:500 - 1:1000
理论分子量	38kDa
实测分子量	38kDa
形式	Liquid
保存条件	Store at -20°C. Avoid freeze / thaw cycles. Buffer: PBS with 0.02% sodium azide,50% glycerol,pH7.3.
偶联物	Unconjugated
阳性对照	mouse liver,mouse heart,rat liver
细胞定位	Mitochondrion inner membrane,Multi-pass membrane protein
纯化	Affinity purification

抗原信息

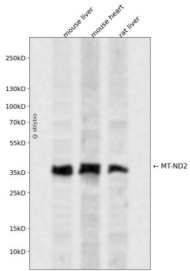
抗原信息	A synthetic peptide corresponding to a sequence within amino acids 50-150 of mouse MT-ND2 (NP_90432 9.1).
序列	PRSTEAATKYFVTQATASMIILLAILVNLNYQLGTWMFQQQTNGLILNMTLMALSMKLGAPHFHWLPEVTQGIPLHMGLILLT WQKIAPLSILIQIYPLLN

靶点信息

研究背景	Predicted to enable NADH dehydrogenase (ubiquinone) activity; ionotropic glutamate receptor binding activity; and protein kinase binding activity. Acts upstream of or within reactive oxygen species metabolic process. Located in mitochondrion. Is expressed in early conceptus and secondary oocyte. Human ortholog (s) of this gene implicated in Leber hereditary optic neuropathy; multiple sclerosis; myocardial infarction; neurodegenerative disease (multiple); and urinary bladder cancer. Orthologous to human MT-ND2 (mitochondrially encoded NADH:ubiquinone oxidoreductase core subunit 2).
------	---

基因ID	17717
基因名	
Swiss	
别名	MT-ND2;MTND2;ND2

产品验证



Western blot analysis of MT-ND2 expressed in mouse liver, mouse heart, rat liver using MT-ND2 Rabbit p Ab at 1:1000. Secondary antibody: HRP Goat Anti-Rabbit IgG (H+L) at 1:5000. Lysates/proteins: 30ug per lane. Blocking buffer: 5% non-fat dry milk in TBST. Detection: ECL Enhanced Kit. Exposure time: 120 S.

实验步骤

访问官网浏览详情: www.ablybio.cn