

GRPEL2 Rabbit pAb

货号: **AYP12167**

产品信息

反应	Human,Mouse,Rat
宿主	Rabbit
克隆性	Polyclonal
预测反应	WB: HepG2 , Homo sapiens , Mus musculus
应用	WB IHC
推荐浓度	WB: 1:500 - 1:2000 IHC: 1:50 - 1:200
理论分子量	14kDa/25kDa
实测分子量	20kDa
形式	Liquid
保存条件	Store at -20°C. Avoid freeze / thaw cycles. Buffer: PBS with 0.02% sodium azide,50% glycerol,pH7.3.
偶联物	Unconjugated
阳性对照	U-251MG,LO2,K-562,MCF7,Mouse liver,Mouse kidney,Mouse brain,Mouse lung
细胞定位	Mitochondrion matrix
纯化	Affinity purification

抗原信息

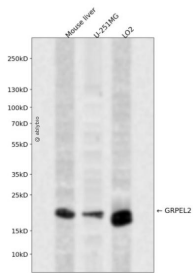
抗原信息	Recombinant fusion protein containing a sequence corresponding to amino acids 33-225 of human GRPEL 2 (NP_689620.2).
序列	STATQRTAGEDCRSEDPPELGPPLAERALRVKAVKLEKEVQDLTVRYQRAIADCENIRRRTQRCVEDAKIFGIQSFCKDLV EVADILEKTTECISEESEPEDQKLTLEKVFRGLLLLEAKLKSVMFAKHGLEKLTPIGDKYDPHEHELICHVPAGVGVQPGTVALV RQDGYKLHGRTIRLARVEVAVESQRRL

靶点信息

研究背景	Essential component of the PAM complex, a complex required for the translocation of transit peptide-containing proteins from the inner membrane into the mitochondrial matrix in an ATP-dependent manner. See ms to control the nucleotide-dependent binding of mitochondrial HSP70 to substrate proteins. Stimulates ATPase activity of mt-HSP70. May also serve to modulate the interconversion of oligomeric (inactive and monomeric (active forms of mt-HSP70 (By similarity.
------	---

基因ID	134266
基因名	GRPEL2
Swiss	Q8TAA5
别名	GRPEL2;Mt-GrpE#2;GrpE like 2

产品验证



Western blot analysis of GRPEL2 expressed in Mouse liver,U-251MG,LO2 using GRPEL2 Rabbit pAb at 1:1000. Secondary antibody: HRP Goat Anti-Rabbit IgG (H+L) at 1:5000. Lysates/proteins: 30ug per lane. Blocking buffer: 5% non-fat dry milk in TBST. Detection: ECL Enhanced Kit. Exposure time: 120s.

实验步骤

访问官网浏览详情: www.ablybio.cn