

TSC1 Rabbit pAb

货号: **AYP12161**

产品信息

反应	Human,Mouse,Rat
宿主	Rabbit
克隆性	Polyclonal
预测反应	WB: Human chronic myeloid leukemia cells , Homo sapiens IF: Human bone marrow cancer cell IHC: Homo sapiens
应用	WB IHC IF/ICC
推荐浓度	WB: 1:500 - 1:1000 IHC: 1:50 - 1:100 IF/ICC: 1:50 - 1:100
理论分子量	124kDa/129kDa
实测分子量	150KDa
形式	Liquid
保存条件	Store at -20°C. Avoid freeze / thaw cycles. Buffer: PBS with 0.02% sodium azide,50% glycerol,pH7.3.
偶联物	Unconjugated
阳性对照	Rat spleen
细胞定位	Cytoplasm,Membrane,Peripheral membrane protein
纯化	Affinity purification

抗原信息

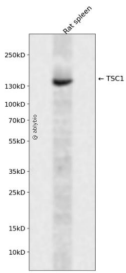
抗原信息	A synthetic peptide corresponding to a sequence within amino acids 550-650 of human TSC1 (NP_000359.1).
序列	QAFTPIDLPCGSADESPAGDRECQTSLETSIFTPSPCKIPPPTRVGFSGSQPPPYDHLFEVALPKTAHHFVIRKTEELLKKAKGNTTEEDGVPSTSPMEVLD

靶点信息

研究背景	This gene encodes a growth inhibitory protein thought to play a role in the stabilization of tuberin. Mutations in this gene have been associated with tuberous sclerosis. Alternative splicing results in multiple transcript variants.
------	--

基因ID	7248
基因名	TSC1
Swiss	Q92574
别名	TSC1;LAM;TSC;hamartin

产品验证



Western blot analysis of TSC1 expressed in Rat spleen using TSC1 Rabbit pAb at 1:1000. Secondary antibody: HRP Goat Anti-Rabbit IgG (H+L) at 1:5000. Lysates/proteins: 30ug per lane. Blocking buffer: 5% non-fat dry milk in TBST. Detection: ECL Enhanced Kit. Exposure time: 120s.

实验步骤

访问官网浏览详情: www.ablybio.cn