

FEN-1 Rabbit pAb

货号: **AYP12160**

产品信息

反应	Human,Mouse
宿主	Rabbit
克隆性	Polyclonal
预测反应	IHC: Human liver cancer , Homo sapiens WB: Homo sapiens
应用	WB IHC IF/ICC IP
推荐浓度	WB: 1:500 - 1:2000 IHC: 1:50 - 1:200 IF/ICC: 1:10 - 1:100 IP: 1:50 - 1:200
理论分子量	35kDa/42kDa
实测分子量	48kDa
形式	Liquid
保存条件	Store at -20°C. Avoid freeze / thaw cycles. Buffer: PBS with 0.02% sodium azide,50% glycerol,pH7.3.
偶联物	Unconjugated
阳性对照	NIH/3T3,HeLa,Jurkat,Y79,Mouse spleen,Mouse testis
细胞定位	Mitochondrion,Nucleus,nucleolus,nucleoplasm
纯化	Affinity purification

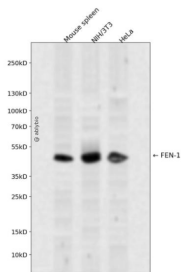
抗原信息

抗原信息	Recombinant fusion protein containing a sequence corresponding to amino acids 50-380 of human FEN-1 (NP_004102.1).
序列	GDVLQNEEGETTSHLMGMFYRTIRMMENGIPVYVFDGKPPQLKSGELAKRSERRAEAEKQLQQAQAAGAEQEVEKFTK RLVKVTKQHNDCKHLLSLMGIPYLDAPSEAEASCAALVKAGKVYAAATEDMDCLTFGSPVLMRHLTASEAKKLPQEFHL SRILQELGLNQEQFVLDLCILLGSDYCESIRGIGPKRAVDLIQKHKSIEEIVRRLDPNKYVPENWLHKEAHQLFLEPEVLDPE VELKWSEPNEEELIKFMCGEKQFSEERIRSGVKRLSKSRQGSTQGRLLDDFFKVTGSLSSAKRKEPEPKGSTKKKAKTGAA GKFKRGK

靶点信息

研究背景	The protein encoded by this gene removes 5' overhanging flaps in DNA repair and processes the 5' ends of Okazaki fragments in lagging strand DNA synthesis. Direct physical interaction between this protein and AP endonuclease 1 during long-patch base excision repair provides coordinated loading of the proteins onto the substrate, thus passing the substrate from one enzyme to another. The protein is a member of the XPG/RAD2 endonuclease family and is one of ten proteins essential for cell-free DNA replication. DNA secondary structure can inhibit flap processing at certain trinucleotide repeats in a length-dependent manner by concealing the 5' end of the flap that is necessary for both binding and cleavage by the protein encoded by this gene. Therefore, secondary structure can deter the protective function of this protein, leading to site-specific trinucleotide expansions.
基因ID	2237
基因名	FEN1
Swiss	P39748
别名	FEN1;FEN-1;MF1;RAD2

产品验证



Western blot analysis of FEN-1 expressed in Mouse spleen,NIH/3T3,HeLa using FEN-1 Rabbit pAb at 1:1000. Secondary antibody: HRP Goat Anti-Rabbit IgG (H+L) at 1:5000. Lysates/proteins: 30ug per lane. Blocking buffer: 5% non-fat dry milk in TBST. Detection: ECL Enhanced Kit. Exposure time: 120s.

实验步骤

访问官网浏览详情: www.ablybio.cn