

# MCT1/SLC16A1 Rabbit pAb

货号: **AYP12154**

## 产品信息

反应	Human,Mouse,Rat
宿主	Rabbit
克隆性	Polyclonal
预测反应	<b>WB:</b> HCT116 , Rattus norvegicus <b>IF:</b> Homo sapiens
应用	<a href="#">WB</a> <a href="#">IF/ICC</a>
推荐浓度	<b>WB:</b> 1:1000 - 1:5000 <b>IF/ICC:</b> 1:50 - 1:200
理论分子量	46kDa/53kDa
实测分子量	45KDa
形式	Liquid
保存条件	Store at -20°C. Avoid freeze / thaw cycles. Buffer: PBS with 0.05% proclin300,50% glycerol,pH7.3.
偶联物	Unconjugated
阳性对照	HeLa,Mouse heart,Rat thymus
细胞定位	Cell membrane,Multi-pass membrane protein
纯化	Affinity purification

## 抗原信息

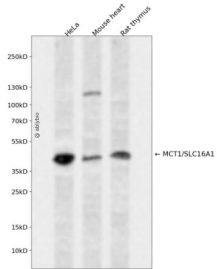
抗原信息	Recombinant fusion protein containing a sequence corresponding to amino acids 196-245 of human MCT 1 (NP_003042.3).
序列	RPIGPKPTKAGKDKSKASLEKAGKSGVKKDLHDANTDLIGRHPKQEKRSV

## 靶点信息

研究背景	The protein encoded by this gene is a proton-linked monocarboxylate transporter that catalyzes the movement of many monocarboxylates, such as lactate and pyruvate, across the plasma membrane. Mutations in this gene are associated with erythrocyte lactate transporter defect. Alternatively spliced transcript variants have been found for this gene.
基因ID	6566

基因名	SLC16A1
Swiss	P53985
别名	SLC16A1;HHF7;MCT;MCT1;MCT1D

## 产品验证



Western blot analysis of MCT1/SLC16A1 expressed in HeLa, Mouse heart, Rat thymus using MCT1/SLC16A1 Rabbit pAb at 1:1000. Secondary antibody: HRP Goat Anti-Rabbit IgG (H+L) at 1:5000. Lysates/proteins: 30ug per lane. Blocking buffer: 5% non-fat dry milk in TBST. Detection: ECL Enhanced Kit. Exposure time: 120s.

## 实验步骤

访问官网浏览详情: [www.ablybio.cn](http://www.ablybio.cn)