

MKL1 Rabbit pAb

货号: **AYP12151**

产品信息

反应	Human,Mouse,Rat
宿主	Rabbit
克隆性	Polyclonal
预测反应	WB: Cervical cancer cells , Homo sapiens IF: Cervical cancer cells , Rattus norvegicus
应用	WB IHC IF/ICC IP
推荐浓度	WB: 1:500 - 1:2000 IHC: 1:50 - 1:200 IF/ICC: 1:50 - 1:200 IP: 1:20 - 1:50
理论分子量	98kDa
实测分子量	145kDa
形式	Liquid
保存条件	Store at -20°C. Avoid freeze / thaw cycles. Buffer: PBS with 0.02% sodium azide,50% glycerol,pH7.3.
偶联物	Unconjugated
阳性对照	TE-1,HeLa,Mouse lung,Rat testis
细胞定位	Cytoplasm,Nucleus
纯化	Affinity purification

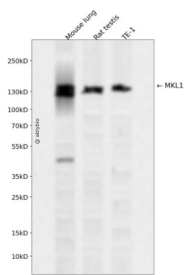
抗原信息

抗原信息	Recombinant fusion protein containing a sequence corresponding to amino acids 1-280 of human MKL1 (NP_065882.1).
序列	MPPLKSPAAFHEQRRSLERARTEDYLKRRKIRSRPERSELVRMHILEETSAEPSLQAKQLKLRARLADDLNEKIAQRPGPMELVEKNILPVESSLKEAIVGQVNYPKVADSSSFDEDS DALSP EQPASHESQGSVPSPEARVSEPLLSATSASPTQVVSQLP MGRDSREMLFLAEQPPLPPPPLPPSLTNGTTIPTAKSTPTLIKQSQPKSASEKSQRSKKAKELKPKVKLKYHQYIPPDQKQ DRGAPPMDSSYAKILQQQLFLQLQILNQQQQ

靶点信息

研究背景	The protein encoded by this gene interacts with the transcription factor myocardin, a key regulator of smooth muscle cell differentiation. The encoded protein is predominantly nuclear and may help transduce signals from the cytoskeleton to the nucleus. This gene is involved in a specific translocation event that creates a fusion of this gene and the RNA-binding motif protein-15 gene. This translocation has been associated with acute megakaryocytic leukemia. Alternative splicing results in multiple transcript variants.
基因ID	57591
基因名	MKL1
Swiss	Q969V6
别名	MKL1;BSAC;MAL;MRTF-A

产品验证



Western blot analysis of MKL1 expressed in Mouse lung,Rat testis,TE-1 using MKL1 Rabbit pAb at 1:1000. Secondary antibody: HRP Goat Anti-Rabbit IgG (H+L) at 1:5000. Lysates/proteins: 30ug per lane. Blocking buffer: 5% non-fat dry milk in TBST. Detection: ECL Enhanced Kit. Exposure time: 120s.

实验步骤

访问官网浏览详情: www.ablybio.cn