

GRK1 Rabbit pAb

货号: **AYP12145**

产品信息

| | |
|-------|--|
| 反应 | Human,Mouse,Rat |
| 宿主 | Rabbit |
| 克隆性 | Polyclonal |
| 预测反应 | IF: Zebrafish , Danio rerio WB: Zebrafish , Danio rerio IHC: Danio rerio |
| 应用 | WB IHC IF/ICC |
| 推荐浓度 | WB: 1:200 - 1:2000 IHC: 1:50 - 1:200 IF/ICC: 1:50 - 1:200 |
| 理论分子量 | 63kDa |
| 实测分子量 | 65kDa |
| 形式 | Liquid |
| 保存条件 | Store at -20°C. Avoid freeze / thaw cycles. Buffer: PBS with 0.02% sodium azide,50% glycerol,pH7.3. |
| 偶联物 | Unconjugated |
| 阳性对照 | Y79 |
| 细胞定位 | Lipid-anchor,Membrane |
| 纯化 | Affinity purification |

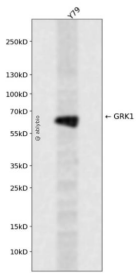
抗原信息

| | |
|------|--|
| 抗原信息 | Recombinant fusion protein containing a sequence corresponding to amino acids 1-160 of human GRK1 (NP_002920.1). |
| 序列 | MDFGSLETVVANSAFIAARGSGFDGSSSQPSRDKKYLAKLKLPLPSKCESLRDLSLEFESVCLEQPIGKKLFQQLQSAEKH LPALELWKDIEDYDTADNDLQPQKAQTILAQYLDPAKLFCSFLDEGIVAKFKEGPVEIQDGLFQPLLQATLAHLGQA |

靶点信息

| | |
|-------|---|
| 研究背景 | This gene encodes a member of the guanine nucleotide-binding protein (G protein)-coupled receptor kinase subfamily of the Ser/Thr protein kinase family. The protein phosphorylates rhodopsin and initiates its deactivation. Defects in GRK1 are known to cause Oguchi disease 2 (also known as stationary night blindness Oguchi type-2). |
| 基因ID | 6011 |
| 基因名 | GRK1 |
| Swiss | Q15835 |
| 别名 | GRK1;GPRK1;RHOK;RK |

产品验证



Western blot analysis of GRK1 expressed in Y79 using GRK1 Rabbit pAb at 1:1000. Secondary antibody: HRP Goat Anti-Rabbit IgG (H+L) at 1:5000. Lysates/proteins: 30ug per lane. Blocking buffer: 5% non-fat dry milk in TBST. Detection: ECL Enhanced Kit. Exposure time: 120s.

实验步骤

访问官网浏览详情: www.ablybio.cn