

— ABLYBIO, Help Your Research



Phospho-PLN-T17 Rabbit pAb

货号: **AYP12091**

产品信息

反应	Human,Mouse,Rat
宿主	Rabbit
克隆性	Polyclonal
预测反应	WB: Homo sapiens , Mus musculus , Rattus norvegicus
应用	WB IHC
推荐浓度	WB: 1:500 - 1:2000 IHC: 1:50 - 1:200
理论分子量	6kDa
实测分子量	6kDa
形式	Liquid
保存条件	Store at -20°C. Avoid freeze / thaw cycles. Buffer: PBS with 0.01% thiomersal,50% glycerol,pH7.3.
偶联物	Unconjugated
阳性对照	
细胞定位	endoplasmic reticulum,mitochondrial membrane,mitochondrion,perinuclear region of cytoplasm
纯化	Affinity purification

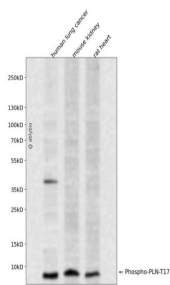
抗原信息

抗原信息	A synthetic phosphorylated peptide around T17 of human PLN (NP_002658.1).
------	---

靶点信息

研究背景	The protein encoded by this gene is found as a pentamer and is a major substrate for the cAMP-dependent protein kinase in cardiac muscle. The encoded protein is an inhibitor of cardiac muscle sarcoplasmic reticulum Ca(2+)-ATPase in the unphosphorylated state, but inhibition is relieved upon phosphorylation of the protein. The subsequent activation of the Ca(2+) pump leads to enhanced muscle relaxation rates, thereby contributing to the inotropic response elicited in heart by beta-agonists. The encoded protein is a key regulator of cardiac diastolic function. Mutations in this gene are a cause of inherited human dilated cardiomyopathy with refractory congestive heart failure, and also familial hypertrophic cardiomyopathy. [provided by RefSeq, Apr 2016]
基因ID	5350
基因名	PLN
Swiss	P26678 (https://www.uniprot.org/uniprotkb/P26678/entry)
别名	CMD1P,CMH18,PLB,PLN,Phospho-PLN-T17 Rabbit pAb

产品验证



Western blot analysis of Phospho-PLN-T17 expressed in human lung cancer, mouse kidney, rat heart using Phospho-PLN-T17 Rabbit pAb at 1:1000. Secondary antibody: HRP Goat Anti-Rabbit IgG (H+L) at 1:5000. Lysates/proteins: 30ug per lane. Blocking buffer: 5% non-fat dry milk in TBST. Detection: ECL Enhanced Kit. Exposure time: 120s.

实验步骤

访问官网浏览详情: www.ablybio.cn (<https://www.ablybio.cn/www.ablybio.cn>)