

# Phospho-IKK $\alpha$ / $\beta$ -S176/180 Rabbit pAb

货号: **AYP12086**

## 产品信息

反应	Human
宿主	Rabbit
克隆性	Polyclonal
预测反应	<b>WB:</b> Homo sapiens , Mus musculus
应用	<a href="#">WB</a>
推荐浓度	<b>WB:</b> 1:500 - 1:2000
理论分子量	
实测分子量	85kDa
形式	Liquid
保存条件	Store at -20°C. Avoid freeze / thaw cycles. Buffer: PBS with 0.01% thiomersal,50% glycerol,pH7.3.
偶联物	Unconjugated
阳性对照	HeLa
细胞定位	
纯化	Affinity purification

## 抗原信息

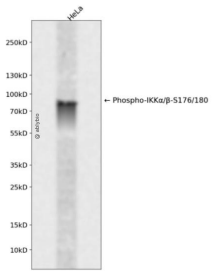
抗原信息	A synthetic phosphorylated peptide around S176 & S180 of human IKK $\alpha$ / $\beta$ CHUK (NP_001269.3).
序列	SLCTS

## 靶点信息

研究背景	This gene encodes a member of the serine/threonine protein kinase family. The encoded protein, a component of a cytokine-activated protein complex that is an inhibitor of the essential transcription factor NF- $\kappa$ B complex, phosphorylates sites that trigger the degradation of the inhibitor via the ubiquitination pathway, thereby activating the transcription factor. [provided by RefSeq, Jul 2008]
基因ID	1147,3551
基因名	CHUK,IKBKB

<b>Swiss</b>	
别名	

## 产品验证



Western blot analysis of Phospho-IKK $\alpha$ / $\beta$ -S176/180 expressed in HeLa using Phospho-IKK $\alpha$ / $\beta$ -S176/180 Rabbit pAb at 1:1000. Secondary antibody: HRP Goat Anti-Rabbit IgG (H+L) at 1:5000. Lysates/proteins: 30ug per lane. Blocking buffer: 5% non-fat dry milk in TBST. Detection: ECL Enhanced Kit. Exposure time: 120s.

## 实验步骤

访问官网浏览详情: [www.ablybio.cn](http://www.ablybio.cn)