

Phospho-MYL9-T18/S19 Rabbit pAb

货号: **AYP12084**

产品信息

反应	Human,Mouse,Rat
宿主	Rabbit
克隆性	Polyclonal
预测反应	WB: Homo sapiens , Mus musculus
应用	WB IHC
推荐浓度	WB: 1:1000 - 1:5000 IHC: 1:50 - 1:200
理论分子量	13kDa/19kDa
实测分子量	18KDa
形式	Liquid
保存条件	Store at -20°C. Avoid freeze / thaw cycles. Buffer: PBS with 0.01% thiomersal,50% glycerol,pH7.3.
偶联物	Unconjugated
阳性对照	HeLa
细胞定位	cell cortex,cytoplasm,cytosol,myofibril,Z disc
纯化	Affinity purification

抗原信息

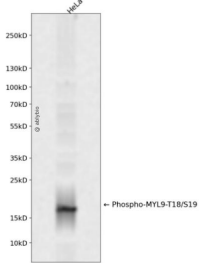
抗原信息	A synthetic phosphorylated peptide around T18 & S19 of human MYL9 (NP_006088.2).
序列	ATSNV

靶点信息

研究背景	Myosin, a structural component of muscle, consists of two heavy chains and four light chains. The protein encoded by this gene is a myosin light chain that may regulate muscle contraction by modulating the ATPase activity of myosin heads. The encoded protein binds calcium and is activated by myosin light chain kinase. Two transcript variants encoding different isoforms have been found for this gene.
基因ID	10398

基因名	MYL9
Swiss	P24844
别名	MYL9;LC20;MLC-2C;MLC2;MRLC1;MYRL2

产品验证



Western blot analysis of Phospho-MYL9-T18/S19 expressed in HeLa using Phospho-MYL9-T18/S19 Rabbit pAb at 1:1000. Secondary antibody: HRP Goat Anti-Rabbit IgG (H+L) at 1:5000. Lysates/proteins: 30ug per lane. Blocking buffer: 5% non-fat dry milk in TBST. Detection: ECL Enhanced Kit. Exposure time: 120s.

实验步骤

访问官网浏览详情: www.ablybio.cn