

MMP13 Rabbit pAb

货号: **AYP12079**

产品信息

反应	Human,Mouse,Rat
宿主	Rabbit
克隆性	Polyclonal
预测反应	WB: Rattus norvegicus IHC: Rattus norvegicus IF: Mus musculus
应用	WB IF/ICC
推荐浓度	WB: 1:500 - 1:1000 IF/ICC: 1:50 - 1:200
理论分子量	53kDa
实测分子量	70KDa/55KDa
形式	Liquid
保存条件	Store at -20°C. Avoid freeze / thaw cycles. Buffer: PBS with 0.01% thiomersal,50% glycerol,pH7.3.
偶联物	Unconjugated
阳性对照	293T,HeLa,MCF7,A-549
细胞定位	Secreted,extracellular matrix,extracellular space
纯化	Affinity purification

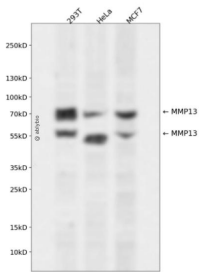
抗原信息

抗原信息	Recombinant fusion protein containing a sequence corresponding to amino acids 104-272 of human MMP 13 (NP_002418.1).
序列	YNVFPRTLKWSKMNLTYRIVNYTPDMTHSEVEKAFKAFKVVSDVTPLNFTLRHLDGIADIMISFGIKEHGDFYPPFDGPSGL LAHAFPPGPNYGGDAHFDDETTWTSSSKGYNLFLVAAHEFGHSLGLDHSKDPGALMFPIYTYTGKSHFMLPDDDDVQGIQ SLYGPGDED

靶点信息

研究背景	This gene encodes a member of the peptidase M10 family of matrix metalloproteinases (MMPs). Proteins in this family are involved in the breakdown of extracellular matrix in normal physiological processes, such as embryonic development, reproduction, and tissue remodeling, as well as in disease processes, such as arthritis and metastasis. The encoded preproprotein is proteolytically processed to generate the mature protease. This protease cleaves type II collagen more efficiently than types I and III. It may be involved in articular cartilage turnover and cartilage pathophysiology associated with osteoarthritis. Mutations in this gene are associated with metaphyseal anadysplasia. This gene is part of a cluster of MMP genes on chromosome 11.
基因ID	4322
基因名	MMP13
Swiss	P45452
别名	MMP13;CLG3;MANDP1;MDST;MMP-13

产品验证



Western blot analysis of MMP13 expressed in 293T, HeLa, MCF7 using MMP13 Rabbit pAb at 1:1000. Secondary antibody: HRP Goat Anti-Rabbit IgG (H+L) at 1:5000. Lysates/proteins: 30ug per lane. Blocking buffer: 5% non-fat dry milk in TBST. Detection: ECL Enhanced Kit. Exposure time: 120s.

实验步骤

访问官网浏览详情: www.ablybio.cn