

Cathepsin B Rabbit pAb

货号: AYP12056

产品信息

反应	Human,Mouse,Rat
宿主	Rabbit
克隆性	Polyclonal
预测反应	WB: Sus scrofa , Homo sapiens IF: Homo sapiens
应用	WB IHC IF/ICC
推荐浓度	WB: 1:500 - 1:1000 IHC: 1:50 - 1:200 IF/ICC: 1:50 - 1:200
理论分子量	37kDa
实测分子量	24kDa/27kDa/44kDa
形式	Liquid
保存条件	Store at -20°C. Avoid freeze / thaw cycles. Buffer: PBS with 0.01% thiomersal,50% glycerol,pH7.3.
偶联物	Unconjugated
阳性对照	HepG2,A375,HT-1080,Rat kidney,Mouse thymus
细胞定位	Lysosome,Melanosome,Secreted,extracellular space
纯化	Affinity purification

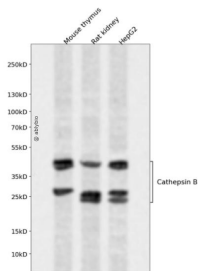
抗原信息

抗原信息	Recombinant fusion protein containing a sequence corresponding to amino acids 18-339 of human Cathepsin B (NP_680093.1).
序列	RSRPSFHPLSDELVNYVNRNTTWQAGHNFYVNDMSYLKRLCGTFLGGPKPPQRMFTEDLKLPAFDAREQWPQCPTI KEIRDQGSCGSCWAFGAVEAISDRICHTNAHVSVEVSAEDLLTCCGSMCGDGCNGGYPAEAWNFWTRKGLVSGGLYE SHVGC RPYSIPPCEHHVNGSRPPCTGEGDTPKCSKICEPGYSPTYKQDKHYGNSYSVSNSEKDIMAEIYKNGPVEGAFSV YSDFLLYKSGVYQHVTGEMMGHAIRILGWGVENGTPYWLVANSWNTDWDGNGFFKILRGQDHCGIESEVVAGIPRTD QYWEKI

靶点信息

研究背景	This gene encodes a member of the C1 family of peptidases. Alternative splicing of this gene results in multiple transcript variants. At least one of these variants encodes a preproprotein that is proteolytically processed to generate multiple protein products. These products include the cathepsin B light and heavy chains, which can dimerize to form the double chain form of the enzyme. This enzyme is a lysosomal cysteine protease with both endopeptidase and exopeptidase activity that may play a role in protein turnover. It is also known as amyloid precursor protein secretase and is involved in the proteolytic processing of a amyloid precursor protein (APP). Incomplete proteolytic processing of APP has been suggested to be a causative factor in Alzheimer's disease, the most common cause of dementia. Overexpression of the encoded protein has been associated with esophageal adenocarcinoma and other tumors. Multiple pseudogenes of this gene have been identified.
基因ID	1508
基因名	CTSB
Swiss	P07858
别名	APPS;CPSB;Cathepsin B;CTSB

产品验证



Western blot analysis of Cathepsin B expressed in Mouse thymus, Rat kidney, HepG2 using Cathepsin B Rabbit pAb at 1:1000. Secondary antibody: HRP Goat Anti-Rabbit IgG (H+L) at 1:5000. Lysates/protein s: 30ug per lane. Blocking buffer: 5% non-fat dry milk in TBST. Detection: ECL Enhanced Kit. Exposure time: 120s.

实验步骤

访问官网浏览详情: www.ablybio.cn