

# HLA-C Rabbit pAb

货号: **AYP12050**

## 产品信息

反应	Human,Mouse
宿主	Rabbit
克隆性	Polyclonal
预测反应	<b>WB:</b> Homo sapiens,Mus musculus , Mus musculus , Homo sapiens
应用	<a href="#">WB</a> <a href="#">IF/ICC</a>
推荐浓度	<b>WB:</b> 1:500 - 1:2000 <b>IF/ICC:</b> 1:50 - 1:200
理论分子量	41kDa
实测分子量	41kDa
形式	Liquid
保存条件	Store at -20°C. Avoid freeze / thaw cycles. Buffer: PBS with 0.02% sodium azide,50% glycerol,pH7.3.
偶联物	Unconjugated
阳性对照	LO2,HL-60,Jurkat,Mouse liver
细胞定位	Membrane,Single-pass type I membrane protein
纯化	Affinity purification

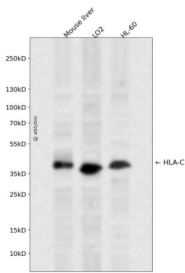
## 抗原信息

抗原信息	Recombinant fusion protein containing a sequence corresponding to amino acids 25-308 of human HLA-C (P30499).
序列	CSHSMKYFFTSVSRPGRGEPFRFISVGYVDDTQFVRFSDAASPRGEPRAPWVEQEGPEYWDRETQKYNRQAQTDRVSL RNLRGYYNQSEAGSHTLQWMCGCDLGPDRLLRGYDQYAYDGKDYIALNEDLRSWTAADTAAQITQRKWEAAREAEER RAYLEGTCVEWLRRLRYLENGKESLQRAEHPKTHVTHHPVSDHEATLRCWALGFYPAEITLTWQWDGEDQTQDTELVETRP AGDGTFFQKWAAMVPSGEEQRYTCHVQHEGLPEPLTLRWEPSQPTIPI

## 靶点信息

研究背景	HLA-C belongs to the HLA class I heavy chain paralogues. This class I molecule is a heterodimer consisting of a heavy chain and a light chain (beta-2 microglobulin). The heavy chain is anchored in the membrane. Class I molecules play a central role in the immune system by presenting peptides derived from endoplasmic reticulum lumen. They are expressed in nearly all cells. The heavy chain is approximately 45 kDa and its gene contains 8 exons. Exon one encodes the leader peptide, exons 2 and 3 encode the alpha1 and alpha2 domain, which both bind the peptide, exon 4 encodes the alpha3 domain, exon 5 encodes the transmembrane region, and exons 6 and 7 encode the cytoplasmic tail. Polymorphisms within exon 2 and exon 3 are responsible for the peptide binding specificity of each class one molecule. Typing for these polymorphisms is routinely done for bone marrow and kidney transplantation. Over one hundred HLA-C alleles have been described
基因ID	3107
基因名	HLA-C
Swiss	P10321
别名	HLA-C;D6S204;HLA-JY3;HLAC;HLC-C;MHC;PSORS1

## 产品验证



Western blot analysis of HLA-C expressed in Mouse liver, LO2, HL-60 using HLA-C Rabbit pAb at 1:1000. Secondary antibody: HRP Goat Anti-Rabbit IgG (H+L) at 1:5000. Lysates/proteins: 30ug per lane. Blocking buffer: 5% non-fat dry milk in TBST. Detection: ECL Enhanced Kit. Exposure time: 120s.

## 实验步骤

访问官网浏览详情: [www.ablybio.cn](http://www.ablybio.cn)