

# MMP9 Rabbit pAb

货号: **AYP12043**

## 产品信息

|       |  |
|-------|--|
| 反应    | Human,Mouse,Rat  |
| 宿主    | Rabbit   |
| 克隆性   | Polyclonal   |
| 预测反应  | <b>WB:</b> Sanghuangporus vaninii , Rattus norvegicus<br><b>IHC:</b> Rattus norvegicus                 |
| 应用    | <a href="#">WB</a> <a href="#">IHC</a>   |
| 推荐浓度  | <b>WB:</b> 1:500 - 1:1000<br><b>IHC:</b> 1:50 - 1:200  |
| 理论分子量 | 78kDa  |
| 实测分子量 | 92KDa  |
| 形式    | Liquid   |
| 保存条件  | Store at -20°C. Avoid freeze / thaw cycles.<br>Buffer: PBS with 0.02% sodium azide,50% glycerol,pH7.3. |
| 偶联物   | Unconjugated   |
| 阳性对照  | Mouse spleen,Rat kidney  |
| 细胞定位  | Secreted,extracellular matrix,extracellular space  |
| 纯化    | Affinity purification  |

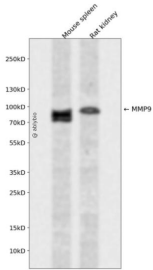
## 抗原信息

|      |   |
|------|---|
| 抗原信息 | Recombinant fusion protein containing a sequence corresponding to amino acids 3-172 of human MMP9 ( NP_004985.2).   |
| 序列   | LWQPLVLVLLVLGCCFAAPRQRQSTLVLFPGDLRTNLTDRLAEEYLYRYGYTRVAEMRGESKSLGPALLLLQQLSLPETG<br>ELDSATLKAMRTPRCGV PDLGRFQTFEGDLKWHHHNITYWIQNYSEDLPRAVIDDAFARAFALWSAVTPLTFTRVYSRDA<br>DIVIQFGV |

## 靶点信息

|       |  |
|-------|--|
| 研究背景  | Proteins of the matrix metalloproteinase (MMP) family are involved in the breakdown of extracellular matrix in normal physiological processes, such as embryonic development, reproduction, and tissue remodeling, as well as in disease processes, such as arthritis and metastasis. Most MMP's are secreted as inactive proproteins which are activated when cleaved by extracellular proteinases. The enzyme encoded by this gene degrades type IV and V collagens. Studies in rhesus monkeys suggest that the enzyme is involved in IL-8-induced mobilization of hematopoietic progenitor cells from bone marrow, and murine studies suggest a role in tumor-associated tissue remodeling. |
| 基因ID  | 4318   |
| 基因名   | MMP9   |
| Swiss | P14780   |
| 别名    | MMP9;CLG4B;GELB;MANDP2;MMP-9   |

## 产品验证



Western blot analysis of MMP9 expressed in Mouse spleen, Rat kidney using MMP9 Rabbit pAb at 1:1000. Secondary antibody: HRP Goat Anti-Rabbit IgG (H+L) at 1:5000. Lysates/proteins: 30ug per lane. Blocking buffer: 5% non-fat dry milk in TBST. Detection: ECL Enhanced Kit. Exposure time: 120s.

## 实验步骤

访问官网浏览详情: [www.ablybio.cn](http://www.ablybio.cn)