

PRSS1 Rabbit pAb

货号: **AYP12025**

产品信息

反应	Human,Mouse
宿主	Rabbit
克隆性	Polyclonal
预测反应	WB: Bombyx mori Linnaeus , Homo sapiens , Mus musculus
应用	WB IHC
推荐浓度	WB: 1:500 - 1:2000 IHC: 1:100 - 1:200
理论分子量	26kDa
实测分子量	35kDa
形式	Liquid
保存条件	Store at -20°C. Avoid freeze / thaw cycles. Buffer: PBS with 0.02% sodium azide,50% glycerol,pH7.3.
偶联物	Unconjugated
阳性对照	HT-29,Mouse spleen,Mouse kidney
细胞定位	Secreted,extracellular space
纯化	Affinity purification

抗原信息

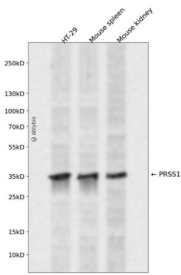
抗原信息	Recombinant fusion protein containing a sequence corresponding to amino acids 24-247 of human PRSS1 (NP_002760.1).
序列	IVGGYNCEENSVPYQVSLNSGYHFCGGSLINEQWVVSAGHCYKSRIQVRLGEHNIEVLEGNEQFINAAKIIRHPQYDRKTLN NDIMLIKSSRAVINARVSTISLPTAPPATGTKCLISGWGNTASSGADYPDELQCLDAPVLSQAKCEASYPGKITSNMFCVG FLEGGKDSCQGDSSGPPVCNGQLQGVVSWGDGCAQKNKPGVYTKVYNYVKWIKNTIAANS

靶点信息

研究背景	This gene encodes a trypsinogen, which is a member of the trypsin family of serine proteases. This enzyme is secreted by the pancreas and cleaved to its active form in the small intestine. It is active on peptide linkages involving the carboxyl group of lysine or arginine. Mutations in this gene are associated with hereditary pancreatitis. This gene and several other trypsinogen genes are localized to the T cell receptor beta locus on chromosome 7.
------	--

基因ID	5644
基因名	PRSS1
Swiss	P07477
别名	PRSS1;TRP1;TRY1;TRY4;TRYP1;trypsin-1

产品验证



Western blot analysis of PRSS1 expressed in HT-29, Mouse spleen, Mouse kidney using PRSS1 Rabbit pAb at 1:1000. Secondary antibody: HRP Goat Anti-Rabbit IgG (H+L) at 1:5000. Lysates/proteins: 30ug per lane. Blocking buffer: 5% non-fat dry milk in TBST. Detection: ECL Enhanced Kit. Exposure time: 120s.

实验步骤

访问官网浏览详情: www.ablybio.cn