

# RPL24 Rabbit pAb

货号: **AYP12007**

## 产品信息

反应	Human,Mouse,Rat
宿主	Rabbit
克隆性	Polyclonal
预测反应	<b>qRT-PCR:</b> Mus musculus <b>WB:</b> Mus musculus , Homo sapiens
应用	<a href="#">WB</a> <a href="#">IHC</a> <a href="#">IF/ICC</a>
推荐浓度	<b>WB:</b> 1:500 - 1:2000 <b>IHC:</b> 1:50 - 1:200 <b>IF/ICC:</b> 1:50 - 1:100
理论分子量	17kDa
实测分子量	18kDa
形式	Liquid
保存条件	Store at -20°C. Avoid freeze / thaw cycles. Buffer: PBS with 0.01% thiomersal,50% glycerol,pH7.3.
偶联物	Unconjugated
阳性对照	HT-29,HepG2,HeLa
细胞定位	cytoplasm,cytosol,cytosolic ribosome,endoplasmic reticulum,extracellular exosome,synapse
纯化	Affinity purification

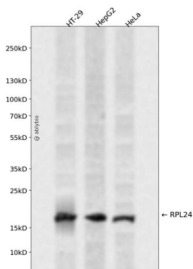
## 抗原信息

抗原信息	Recombinant fusion protein containing a sequence corresponding to amino acids 38-157 of human RPL24 (NP_000977.1).
序列	SAFLSKRNPRQINWTVLYRRKHKKGQSEEIQKKRTRRAVKFQRAITGASLADIMAKRNQKPEVRKAQREQAIRAAKEAKKA KQASKKTAMAAAKAPTKAAPKQKIVKPKVSAPRVGGKR

## 靶点信息

研究背景	Ribosomes, the organelles that catalyze protein synthesis, consist of a small 40S subunit and a large 60S subunit. Together these subunits are composed of 4 RNA species and approximately 80 structurally distinct proteins. This gene encodes a ribosomal protein that is a component of the 60S subunit. The protein belongs to the L24E family of ribosomal proteins. It is located in the cytoplasm. This gene has been referred to as ribosomal protein L30 because the encoded protein shares amino acid identity with the L30 ribosomal proteins from <i>S. cerevisiae</i> ; however, its official name is ribosomal protein L24. As is typical for genes encoding ribosomal proteins, there are multiple processed pseudogenes of this gene dispersed through the genome.
基因ID	6152
基因名	RPL24
Swiss	P83731
别名	RPL24;HEL-S-310;L24

## 产品验证



Western blot analysis of RPL24 expressed in HT-29, HepG2, HeLa using RPL24 Rabbit pAb at 1:1000. Secondary antibody: HRP Goat Anti-Rabbit IgG (H+L) at 1:5000. Lysates/proteins: 30ug per lane. Blocking buffer: 5% non-fat dry milk in TBST. Detection: ECL Enhanced Kit. Exposure time: 120s.

## 实验步骤

访问官网浏览详情: [www.ablybio.cn](http://www.ablybio.cn)