

Cyclin B1 Rabbit pAb

货号: AYP11990

产品信息

反应	Human,Mouse,Rat
宿主	Rabbit
克隆性	Polyclonal
预测反应	WB: Mus musculus , Homo sapiens IHC: Danio rerio
应用	WB IHC IF/ICC IP
推荐浓度	WB: 1:100 - 1:500 IHC: 1:50 - 1:200 IF/ICC: 1:50 - 1:200 IP: 1:50 - 1:100
理论分子量	44kDa/48kDa
实测分子量	55KDa
形式	Liquid
保存条件	Store at -20°C. Avoid freeze / thaw cycles. Buffer: PBS with 0.05% proclin300,50% glycerol,pH7.3.
偶联物	Unconjugated
阳性对照	C2C12,C6
细胞定位	Cytoplasm,Nucleus,centrosome,cytoskeleton,microtubule organizing center
纯化	Affinity purification

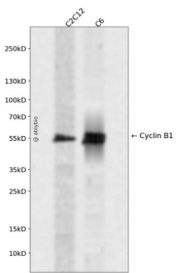
抗原信息

抗原信息	A synthetic peptide corresponding to a sequence within amino acids 334-433 of human Cyclin B1 (NP_114172.1).
序列	YDMVHFPPSQIAAGAFCLALKILDNGEWTPTLQHLYSYTEESLLPVMQHLAKNVVMVNQGLTKHMTVKNKYATSKHAKISTLPQLNSALVQDLAKAVAKV

靶点信息

研究背景	The protein encoded by this gene is a regulatory protein involved in mitosis. The gene product complexes with p34(cdc2) to form the maturation-promoting factor (MPF). Two alternative transcripts have been found, a constitutively expressed transcript and a cell cycle-regulated transcript, that is expressed predominantly during G2/M phase. The different transcripts result from the use of alternate transcription initiation sites.
基因ID	891
基因名	CCNB1
Swiss	P14635
别名	CCNB;CCNB1;Cyclin B1;cyclin B1

产品验证



Western blot analysis of Cyclin B1 expressed in C2C12,C6 using Cyclin B1 Rabbit pAb at 1:1000. Secondary antibody: HRP Goat Anti-Rabbit IgG (H+L) at 1:5000. Lysates/proteins: 30ug per lane. Blocking buffer: 5% non-fat dry milk in TBST. Detection: ECL Enhanced Kit. Exposure time: 120s.

实验步骤

访问官网浏览详情: www.ablybio.cn