

POLI Rabbit pAb

货号: **AYP11980**

产品信息

反应	Human,Mouse
宿主	Rabbit
克隆性	Polyclonal
预测反应	IF: Homo sapiens WB: Homo sapiens IHC: Homo sapiens
应用	WB
推荐浓度	WB: 1:500 - 1:2000
理论分子量	83kDa
实测分子量	85kDa
形式	Liquid
保存条件	Store at -20°C. Avoid freeze / thaw cycles. Buffer: PBS with 0.02% sodium azide,50% glycerol,pH7.3.
偶联物	Unconjugated
阳性对照	BT-474,MCF7,Mouse testis
细胞定位	Nucleus
纯化	Affinity purification

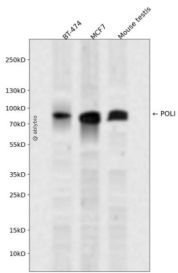
抗原信息

抗原信息	Recombinant fusion protein containing a sequence corresponding to amino acids 50-350 of human POLI (NP_009126.2).
序列	ASSRVIVHVDLDCFYAQVEMISNPELKD KPLGVQKYL VVTCN YEARKLG VVKLMNVRDAKEKCPQLVLVNGEDLTRYRE MSYKVTELLEEFSPVVERLGF DENFVDLTEMVEKRLQQLQSD ELSAVTVSGHVYNNQ SINLLDVLHIRLLVGSQIAAEMREA MYNQLGLTGCAGVASNKLLAKLVSGVFKPNQQT VLLPESCQH LIHSLNHIKEIPGIGYKTAKCLEALGINSVRDLQTFSPKIL EKELGISVAQRIQKLSFGEDNSPVILSGPPQSFSEEDSFKKCSSEVEAKNKIEELL

靶点信息

研究背景	The protein encoded by this gene is an error-prone DNA polymerase involved in DNA repair. The encoded protein promotes DNA synthesis across lesions in the template DNA, which other polymerases cannot do. The encoded polymerase inserts deoxynucleotides across lesions and then relies on DNA polymerase ζ to extend the nascent DNA strand to bypass the lesion.
基因ID	11201
基因名	POLI
Swiss	Q9UNA4
别名	POLI;RAD30B;RAD30B;eta2

产品验证



Western blot analysis of POLI expressed in BT-474, MCF7, Mouse testis using POLI Rabbit pAb at 1:1000. Secondary antibody: HRP Goat Anti-Rabbit IgG (H+L) at 1:5000. Lysates/proteins: 30ug per lane. Blocking buffer: 5% non-fat dry milk in TBST. Detection: ECL Enhanced Kit. Exposure time: 120s.

实验步骤

访问官网浏览详情: www.ablybio.cn