

TRIM21/SS-A Rabbit pAb

货号: **AYP11979**

产品信息

反应	Human,Mouse,Rat
宿主	Rabbit
克隆性	Polyclonal
预测反应	WB: Mus musculus , Homo sapiens IF/ICC: Homo sapiens FC: Homo sapiens
应用	WB IHC IF/ICC IP
推荐浓度	WB: 1:500 - 1:1000 IHC: 1:50 - 1:200 IF/ICC: 1:50 - 1:200 IP: 1:10 - 1:100
理论分子量	45kDa/54kDa
实测分子量	50KDa
形式	Liquid
保存条件	Store at -20°C. Avoid freeze / thaw cycles. Buffer: PBS with 0.05% proclin300,50% glycerol,pH7.3.
偶联物	Unconjugated
阳性对照	Jurkat,HeLa,Rat lung
细胞定位	Cytoplasm,Cytoplasmic vesicle,Nucleus,P-body,autophagosome
纯化	Affinity purification

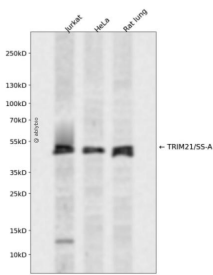
抗原信息

抗原信息	Recombinant fusion protein containing a sequence corresponding to amino acids 86-334 of human TRIM21/SS-A (NP_003132.2).
序列	GTQGERCAVHGERLHLFCEKDGKALCWVCAQSRKHRDHAMVPLEEAAQEYQEKLQVALGELRRKQELAEKLEVEIAIKRADWKKTVETQKSRIHAEFVQKQNFVLEEEQRQLQELEKDEREQLRILGEKEAKLAQQSQALQELISELDRRCHSSALELLQEVIIVLERSESWNLKDLDTISPELRSVCHVPGLKKMLRITCAVHITLDPDTANPWLILSEDRRQVRLGDTQQSIPGNEERFDSYPMVLGA

靶点信息

研究背景	This gene encodes a member of the tripartite motif (TRIM) family. The TRIM motif includes three zinc-binding domains, a RING, a B-box type 1 and a B-box type 2, and a coiled-coil region. The encoded protein is part of the RoSSA ribonucleoprotein, which includes a single polypeptide and one of four small RNA molecules. The RoSSA particle localizes to both the cytoplasm and the nucleus. RoSSA interacts with autoantigens in patients with Sjogren syndrome and systemic lupus erythematosus. Alternatively spliced transcript variants for this gene have been described but the full-length nature of only one has been determined.
基因ID	6737
基因名	TRIM21
Swiss	P19474
别名	TRIM21;RNF81;RO52;Ro/SSA;SSA;SSA1

产品验证



Western blot analysis of TRIM21/SS-A expressed in Jurkat, HeLa, Rat lung using TRIM21/SS-A Rabbit p Ab at 1:1000. Secondary antibody: HRP Goat Anti-Rabbit IgG (H+L) at 1:5000. Lysates/proteins: 30ug per lane. Blocking buffer: 5% non-fat dry milk in TBST. Detection: ECL Enhanced Kit. Exposure time : 120s.

实验步骤

访问官网浏览详情: www.ablybio.cn