

# Phospho-TSC2-T1462 Rabbit pAb

货号: **AYP11966**

## 产品信息

反应	Human,Mouse
宿主	Rabbit
克隆性	Polyclonal
预测反应	<b>WB:</b> Sus scrofa , Homo sapiens , Rattus norvegicus
应用	<a href="#">WB</a>
推荐浓度	<b>WB:</b> 1:500 - 1:1000
理论分子量	25kDa/187-200kDa
实测分子量	200KDa
形式	Liquid
保存条件	Store at -20°C. Avoid freeze / thaw cycles. Buffer: PBS with 0.01% thiomersal,50% glycerol,pH7.3.
偶联物	Unconjugated
阳性对照	MCF7
细胞定位	Cytoplasm,Membrane,Peripheral membrane protein
纯化	Affinity purification

## 抗原信息

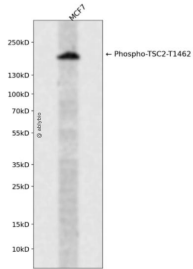
抗原信息	A synthetic phosphorylated peptide around T1462 of human TSC2 (NP_000539.2).
序列	GYTIS

## 靶点信息

研究背景	Mutations in this gene lead to tuberous sclerosis complex. Its gene product is believed to be a tumor suppressor and is able to stimulate specific GTPases. The protein associates with hamartin in a cytosolic complex, possibly acting as a chaperone for hamartin. Alternative splicing results in multiple transcript variants encoding different isoforms.
基因ID	7249
基因名	TSC2

Swiss	P49815
别名	LAM;PPP1R160;TSC4;TSC2;Tuberin;tuberin

## 产品验证



Western blot analysis of Phospho-TSC2-T1462 expressed in MCF7 using Phospho-TSC2-T1462 Rabbit p Ab at 1:1000. Secondary antibody: HRP Goat Anti-Rabbit IgG (H+L) at 1:5000. Lysates/proteins: 30ug per lane. Blocking buffer: 5% non-fat dry milk in TBST. Detection: ECL Enhanced Kit. Exposure time: 12 0s.

## 实验步骤

访问官网浏览详情: [www.ablybio.cn](http://www.ablybio.cn)