

# EREG Rabbit pAb

货号: **AYP11964**

## 产品信息

反应	Human,Mouse,Rat
宿主	Rabbit
克隆性	Polyclonal
预测反应	<b>WB:</b> Mus musculus , Homo sapiens
应用	<a href="#">WB</a>
推荐浓度	<b>WB:</b> 1:500 - 1:1000
理论分子量	19kDa
实测分子量	17KDa/19KDa
形式	Liquid
保存条件	Store at -20°C. Avoid freeze / thaw cycles. Buffer: PBS with 0.01% thiomersal,50% glycerol,pH7.3.
偶联物	Unconjugated
阳性对照	HepG2,SW480,U-87MG,Mouse lung,Rat thymus
细胞定位	Cell membrane,Secreted,Single-pass type I membrane protein,extracellular space
纯化	Affinity purification

## 抗原信息

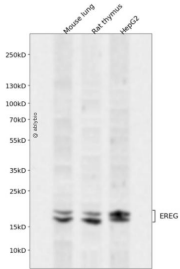
抗原信息	A synthetic peptide corresponding to a sequence within amino acids 100 to the C-terminus of human EREG (NP_001423.1).
序列	GVRCEHFFLTVHQPLSKEYVALTVILILFLITVVGSTYYFCRWYRNRKSKEPKKEYERVTSKDPQLPQV

## 靶点信息

研究背景	This gene encodes a secreted peptide hormone and member of the epidermal growth factor (EGF) family of proteins. The encoded protein is a ligand of the epidermal growth factor receptor (EGFR) and the structurally related erb-b2 receptor tyrosine kinase 4 (ERBB4). The encoded protein may be involved in a wide range of biological processes including inflammation, wound healing, oocyte maturation, and cell proliferation. Additionally, the encoded protein may promote the progression of cancers of various human tissues.
基因ID	2069

基因名	EREG
Swiss	O14944
别名	EREG;EPR;ER;Ep

## 产品验证



Western blot analysis of EREG expressed in Mouse lung,Rat thymus,HepG2 using EREG Rabbit pAb at 1:1000. Secondary antibody: HRP Goat Anti-Rabbit IgG (H+L) at 1:5000. Lysates/proteins: 30ug per lane. Blocking buffer: 5% non-fat dry milk in TBST. Detection: ECL Enhanced Kit. Exposure time: 120s.

## 实验步骤

访问官网浏览详情: [www.ablybio.cn](http://www.ablybio.cn)